



2025

PRODUCT CATALOG

WWW.PIPETOOLS.COM

CALL NOW:
1-866-246-1828

INFO@PIPETOOLS.COM

PIPE TOOLS, INC.

2835 Haddonfield Road
Pennsauken, New Jersey 08110-1108
www.pipetools.com

©2025 PIPE TOOLS INC.

WELCOME!

Pipe Tools is a leading provider of professional tools for water and sewer professionals. We offer a full line of water leak detection, locating and monitoring tools to service many types of end users. At Pipe Tools, we are committed to offering the latest in professional products and services to water and sewer industry professionals, technicians, and everyone else who needs powerful pipe solutions. We have seen and solved issues relating to leak detection and repair, pipeline locating and monitoring, drain and sewer cleaning, and more.

Our quality of life is improved by protecting our infrastructure. We help professionals in the water, gas and sewer industries every year with our advanced leak detection products, sewer cleaning and inspection tools, as well as the pipe and cable locating equipment needed in these industries every day.

/ Our mission is to **save water**, be good **stewards of the environment**, and to **prevent inefficiencies**.

/ **Non-Revenue Water Reduction** Minimizing Losses, Maximizing Safety

Pipe Tools serves the lower 48 states with dedicated sales representatives that can recommend products based on your needs and location. Based in Pennsauken, New Jersey, our experienced sales staff understand the industry and know the best equipment to get the job done.

Water is a precious resource, and we are particularly committed to the prevention of non-revenue water. Whether water is lost due to leaks or metering inaccuracies, Pipe Tools realizes the dangers associated with unseen and unchecked water losses.

Over time, we have provided tools to many experts and professionals working with water and non-revenue water issues across the United States. Our tools have been responsible for finding literally billions of gallons of leaked water from water main and metered pressure zones.

Water Leak Correlators / Correlating Noise Loggers /
Listening Devices for Water Leak Detection Surveys / Ground Microphones /
Leak Detection Sensors Pipe Assessment Software / Hydrophones /
Pressure Management Tools / Magnetic Locators / Sonde, Pipe and Cable Locators



INDEX

1 / WATER LEAK MONITORING SECTION

- AQS (Aquarius Spectrum) Leak Detection & Monitoring System 6
- Von Roll Hydro MTC Leak Monitoring System 8
- FAST-Fiber Optic Vibration and Leak Monitoring 10

2 / PORTABLE LEAK DETECTION KITS

- Von Roll Hydro LEAKPEN Kit..... 12
- Von Roll Hydro Terralog Ground Microphone Kit..... 13
- Von Roll Hydro Log 3000 Correlator Kit..... 14
- FAST Aqua M-40 Handheld Leak Listener Bluetooth Kit..... 15
- FAST Aqua M-50 Handheld Leak Listener Kit..... 16
- FAST AQUA M-60 Handheld with Universal Microphone..... 17
- FAST AQUA M-100..... 18
- FAST Aqua M-200..... 19
- FAST Aqua M-300..... 20
- FAST LOKAL 200 PC..... 21
- FAST Lokal 400 Correlator with MB-6 Measuring Box Transmitters..... 22
- FAST Gas "Tracer Gas" Water Leak Detection..... 23

3 / LOGGER & SENSORS SECTION

- Aquatis Vibration Sensors for Motor & Pump Maintenance 26
- FAST BiDirectional Correlating Loggers 27
- FAST Drulo 3 Pressure Loggers..... 29
- FAST ZM ULTRA..... 30
- Ijinius V4 Environmental Logger..... 31
- Ijinius BLUE LP Data Logger For Water Applications 33
- Ijinius WIRELESS RADAR LEVEL SENSORS..... 34
- Ijinius H2S Sensor and Logger..... 36
- Ijinius Wireless Overflow Detector..... 35
- Sensor Attachments For Loggers..... 36

4 / PIPE MIC SECTION

- FAST Pipe Mic Flex 38
- FAST Pipe Mic M..... 39
- FAST Pipe Mic XL & XXL..... 40

5 / PIPE LOCATING SECTION

- FAST Pulse Wave Generator for Acoustic Pipe Locating..... 42
- FAST MD-100 Metal Detector..... 43
- Schonstedt GA-52 Magnetometer..... 44
- Schonstedt GA-72 Magnetometer..... 45
- Schonstedt GA-92 Magnetometer..... 46
- Schonstedt Maggie Magnetometer..... 47
- Schonstedt Rex Pipe & Cable Locator Kit..... 48
- Schonstedt MPC - Rex / GA92 Combination Pipe & Cable Locator Kit..... 49
- Schonstedt U Locate Pipe & Cable Locator Kit..... 50
- Schonstedt FlexiTrace Push Rod Locator System..... 51
- Schonstedt RD510 Locator & Pulsed Water Transmitter..... 52
- Rycom Magna Stick Magnetometer..... 53
- Rycom Pathfinder Pipe & Cable Locator Kit..... 54
- Rycom EMS Locator for Marker Balls..... 55
- Rycom Sondes..... 56
- Rycom Stick with FE Locator..... 57
- Rycom Clampmitter Transmitter..... 58

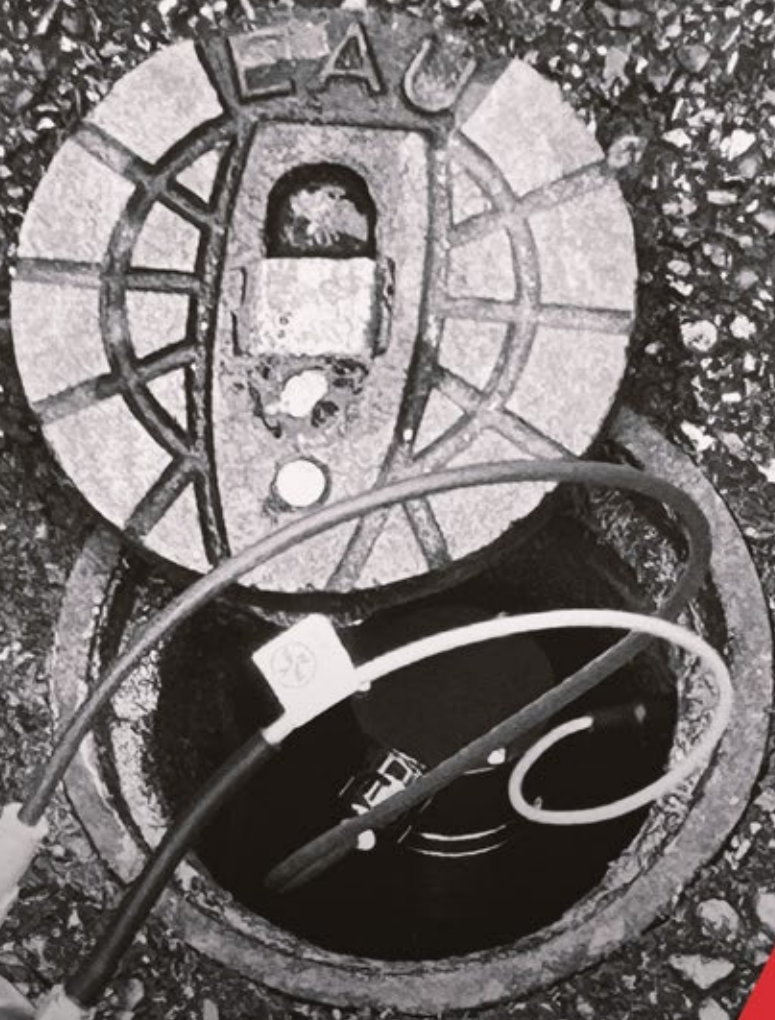
6 / SEWER & DRAIN CLEANING EQUIPMENT

- Electric Eel Model C..... 60
- Electric Eel Main Line Cleaning Tools..... 61
- Electric Eel Model E..... 62
- Electric Eel Model N..... 63
- Electric Eel Drain Line Tools..... 64
- Electric Eel Model Z5..... 65
- Electric Eel Model D5..... 66
- Electric Eel Model CT..... 67
- Electric Eel Model S..... 68
- Electric Eel Model 325..... 69
- Electric Eel Model 800..... 70
- Electric Eel Model EJ 1500C..... 71
- Electric Eel Model EJ 3000B..... 72

7 / INSPECTION CAMERAS

- Electric Eel Vision Elite..... 74
- Pearpoint 540 Flexiprobe Inspection Camera System..... 75
- Pearpoint 550 Flexitrax Inspection Camera System..... 76

1



WATER LEAK MONITORING SECTION

AQUARIUS SPECTRUM (AQS)



/ AQS Edge

Reduce Water Loss and Maximize Efficiency with AQS-Edge - The Most Accurate Leak Detection Solution with Integrated Cat-M/NB-IoT Communication. Engineered for any environment, pipe material, or diameter, AQS-Edge acoustic correlating sensor detects even the smallest leaks, ensuring your network's resiliency and operational efficiency.

From above and belowground acoustic correlating sensors, to pioneering hydrophone technology, AQS's product portfolio is designed for distribution networks and large transmission lines. These solutions are integrated with AQS-SYS cloud platform, powered by advanced algorithms and big data analytics.



AQS-Edge Accelerometer
for Above Ground
Installation



AQS-Edge Accelerometer
for Below Ground
Installation



AQS-Edge Hydrophone
for Below Ground
Installation

/ Key Features

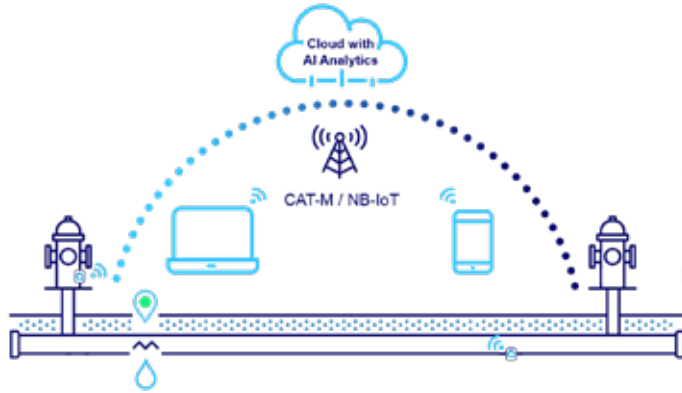
- Easy & Fast installation - Fits on fire hydrants and pipes without interfering with ports and openings
- Cat-M/NB-IoT communication | Bluetooth communication
- iOS & Android App support
- Up to 8 years battery (standard use), Field replaceable battery
- Suitable for Pipe Diameters between 2.5" – 20" for Accelerometer and between 2.5"-118" for Hydrophone.
- Cutting-edge hydrophone optimized for leak detection on PVC, PE, and large diameter pipes.
- Cost-effective network coverage is positioned up to 2460 ft for Transmission lines and up to 1000 ft for Distribution lines.
- NFS-61/372 and WRAS Certification for potable water



* Varies based on pipe's material, topology, diameter and water pressure.

/ AQS-SYS Platform For Continuous Network Monitoring

Enhance Your Water Network Management With the AQS-SYS Platform, Leveraging Advanced Analytics For Smarter, More Efficient Performance.



/ Key Features

- Powered by Advanced Algorithms, AI and Big Data
- ISO/IEC 27001:2022 Certification - for Information Security Management Systems (ISMS).
- Analytics AQS-SYS offers in-depth network analysis
- Advance Audio Analysis: Perform correlation and analysis between Hydrophones & Accelerometers
- (Vibrating Sensors)
- Comprehensive Alert Lifecycle Management & Leak Growth Monitoring
- Leak Classification into A-B-C for effective resource allocation.
- Shadow Leaks offers a Full-Proof Surveillance System
- Raw audio recording and historical data available
- Remote management configuration for field sensors
- Integrated data from Mobile & Fix Units in the same platform
- Ability to generate work orders for 3rd party suppliers.
- Email/SMS Alert Notification

/ Live Demo Opportunity:

Experience the software in action with a free in-house demonstration on an existing system.

For prices, please check 2025 Price List. Note that the prices shown include planning and layout fees, equipment, and SaaS subscription fees.

VON ROLL HYDRO MTC LEAK MONITORING SYSTEM



/ ORTOMAT-MTC — Process optimization in permanent leak monitoring

Using the latest technology, the ORTOMAT-MTC leak monitoring system detects the location of leaks at an early stage. Pipelines operating under pressure can be monitored on a temporary or permanent basis. With automatic correlation, leaks are pinpointed between loggers. Data from loggers is automatically transmitted to the cloud and available online via VonRoll hydro's INFRAPORT visualization and mapping portal. The user is provided with graphical, quantitative, and audio information about leaks.



MTC Basic Sensor

/ Data results:



Vonroll Hydro INFRAPORT Screen devices

/ Key Benefits

- Repair cost savings - Early detection and rapid locating can prevent water damage, saving costly repairs and service outages later when leaks turn into breaks.
- Water loss savings - Small, hidden leaks can lead to surprisingly high-water losses: At a water pressure of 45 psi, a leak with a diameter of 1/3 inch leads to an annual loss of 6.5 million gallons; at 145 psi, the loss is 14 million gallons.
- Permanent early leak detection with high-resolution correlation function
- Unique time synchronization of the individual measurement points with the exact correlation
- Measurement points are independent of one another and communicate directly with the server
- Meaningful analysis with measurement results which are easy to interpret
- No structural or mechanical work during installation
- Operation is possible without an additional wireless network/wireless repeater
- Can be expanded to include additional measurement parameters (pressure, flow rate, level, etc.)
- Easy system expansion possible
- ORTOMAT leak monitoring is used world-wide and has been tested thousands of times

/ Installation

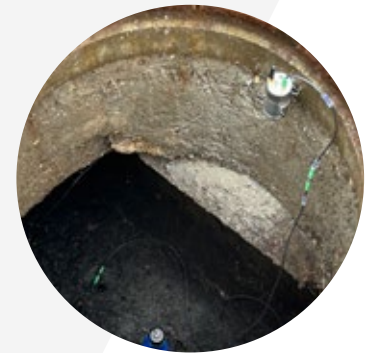
Magnetic adapters connect ORTOMAT-MTC loggers to the inside of manholes, valve boxes or directly to pipes. The devices have durable stainless-steel housing designed for the most adverse conditions. Thanks to their small size and simple installation, loggers can be quickly put into position and activated.



Hydrant Body Adapter



Valve Box



Manhole

FAST FIBER OPTIC VIBRATION AND LEAK MONITORING



Distributed Sensing systems detect either temperature and temperature variations (DTS), or vibrations/acoustic signatures and temperature variations (DAS) along optical fibres. Existing fibre optic networks along the asset, or retrofitted fibre cables inside the infrastructure are utilized and turned into a distributed temperature or acoustic sensor, thereby capturing real time data and helping operators take the right actions.

Classification algorithms are used to detect and locate events such as leaks, cable faults, intrusion activities, or other abnormal behavior. Distributed Temperature (DTS) or Acoustic Sensing (DAS) is a unique system architecture which offers the world's leading measurement range for true phase-based systems without the use of amplification. It improves usability, measurement performance, and reduces signal artifacts such as fading.



/ Key Features

- Available in single and simultaneous two-channel
- Versions with extended standard temperature performance
- Features up to 100 km measurement range with two simultaneous channels
- Intelligent self-diagnosis
- Low optical output power (class 1 laser product)
- Standard Single or Multi mode optical fibre cable can be used



/ Key Benefits

- A compact, lightweight and portable system design
- Suitable for harsh environmental conditions
- Outstanding signal-to-noise ratio (SNR), ideal for phase-based system
- Intelligent event detection
- Extremely low false alarm rate (FAR)
- Reduced commissioning and setup time
- Reduced power consumption
- Increased product lifetime
- Can be integrated into third party software or custom cloud-based solutions

2



PORTABLE LEAK DETECTION KITS

VONROLL LEAKPEN

Small, convenient and user-friendly leak detector with highly sensitive microphone

Mobile device with outstanding measurement properties for prior localization and acoustic leak detection on pressurized pipes. Valves and fittings, hydrants, house connections, etc., are very straightforward to check during maintenance and checks, meter readings or specific searches for leaks.



LEAKPEN case

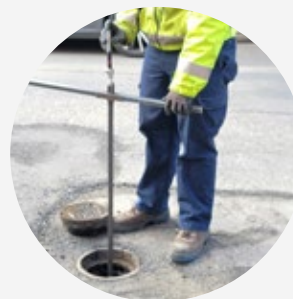
/ Key Features

- **Reliable leak detection** – Identifies abnormal noise levels that indicate potential leaks.
- **Wide listening range** – Detects sounds up to 650 feet along the pipeline (range depends on pipe material and water pressure).
- **Precise leak location** – The louder the noise, the closer the leak to the measuring point.
- **Filtered noise interference** – Calibrated to exclude background noise from pumps, traffic, and machinery.
- **Easy activation** – Internal motion sensor turns the device on with a simple shake.
- **Simple operation** – Just press the pointed tip against a pipeline contact point (valve, hydrant, fitting, etc.).
- **Instant feedback** – LED lights display the pipe's noise level for quick assessment.
- **Bluetooth™ compatibility** – Optional wireless headphones allow users to listen to detected sounds.
- **Cost-effective solution** – Affordable, powerful, and reliable for water network checks.
- **Portable and ready-to-use** – Compact, lightweight, and always on hand for quick inspections.

/ Product Overview



- A** - Acoustic sensor
- B** - Electronics housing with LED display
- C** - Battery compartment
- D** - Battery
- E** - Battery compartment cover with clip
- F** - Sealing Ring



LEAKPEN on a valve



LEAKPEN on a hydrant

VONROLL TERRALOG GROUND MICROPHONE KIT



Near-perfect leak detection

The TERRALOG is a fittings and ground microphone with excellent measuring capabilities for acoustic leak detection in pressurised water pipes. The highly sensitive vibraphone can be connected by cable and is used to measure structure-borne sound on fittings, hydrants and house service connections, as well as ground-borne sound on a wide variety of terrains. The TERRALOG enables effective localisation of the leak site at the pre-location stage up until its exact location can be pinpointed.



/ Key Features

- High-sensitivity vibraphone for outstanding sound quality.
- Clear graphic display with high contrast.
- Bluetooth headphones for interference-free listening.
- Visual noise profile for better analysis.
- Hearing protection for safe operation.
- Record and replay leak noises for review.
- PC connectivity via USB for logging sound recordings.
- Adjustable frequency filter to eliminate background noise.
- Runs on primary or rechargeable batteries with charge level indicator.
- Auto power-off to save energy.
- Lightweight, impact-resistant housing for durability.
- Comes with a full set of accessories in a sturdy case.



/ Complete Terralog Kit

- Durable device case
- TERRALOG hand-held device with remote vibraphone
- Bluetooth™ headphones
- Extension rods and tripod
- Carrying strap
- Operating instructions



VONROLL LOG 3000 CORRELATOR

High sensitivity correlation technology



LOG3000 BT is a mobile correlator for pinpointing leaks in pressurized water pipes of any material. Results are displayed on a laptop or tablet, guiding repairs and inspections. It also helps detect unauthorized connections. Special functions such as surface correlating, displaying correlation characteristics in a histogram graph and automatically referencing lateral sound velocity factors offer additional benefits.



/ Key Features

- High-performance laptop/tablet correlator
- Simple operation
- Highly sensitive VIBROPHONS
- Excellent measurement results

/ Software:

The intuitive LOG3000 BT software serves as the main interface for the system. Once opened, the user is prompted for all necessary parameters. Correlation results are then displayed immediately. Ongoing measurements continue, however, allowing continuous analysis. The software can differentiate leak noises from those caused by external sources such as traffic or heavy machinery.

/ Product Overview

Hardware—The LOG3000 BT components are durable, compact and dependable

Vibrophon is a sensitive listening device capable of detecting leak noises even in environments with low sound propagation, such as plastic pipe.

Receiver—Radio signals are sent by antenna from both red and blue transmitters to the receiver. The receiver then transmits the signals to the laptop or tablet via USB cable

or Bluetooth® connection. The receiver is powered by a standard lithium battery and can be used continuously for up to 12 hours.

Transmitters—The red and blue transmitters amplify the signals measured by the VIBROPHONS and transmit them over the 433 MHz radio band to the receiver. These devices select filter settings automatically. Each transmitter operates on an NIMH battery, allowing continuous operation all day long.



FAST AQUA M-40



Simple Wireless Listening Tool for Pre-Location of Leaks in the Water Distribution Network

The Aqua M-40 is used to listen to pressurized water pipe for leaks. Even small structures borne noise created when a pipe leak can be heard with this device. These results are possible due to the combination of a highly sensitive vibration pick up and applied amplification. The Aqua M-40 can filter high and low frequencies on both metallic and non-metallic pipe to assist in the acquisition of successful measurements. The unit is equipped with Bluetooth technology for the wireless transmission of sound to the headphones. This is a convenient feature for the user.

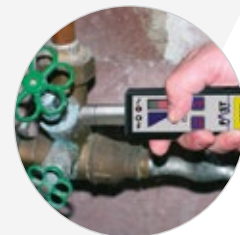


Key Features

- Convenient Pocket Size Tool
- Single Knob Operation
- High Low Filter Range
- 8 Step LED Display
- Leak Status: LED Display of Acoustical Noise
- Resolution Battery: 0-8 Noise Levels, M-40 NMHy Battery Headphon: Li Ion Battery
- Broadcast: Bluetooth 2.0
- Dimensions: 4.48 in x 1.38 in

Aqua M-40 Kit includes:

1. Central unit Aqua M-40
2. Bluetooth Headphones
3. Tripod
4. Charging accessories
5. Magnet
6. Carrying case
7. 2x extension



FAST AQUA M-50

Simple Listening Tool for the Pre-Location of Leaks in the Water Distribution Network



The Aqua M-50D is used to listen to pressurized water pipe for leaks. Due to its compact size it is easy to get into tight spots for listening to valves, pipe, and meters. It is a great tool for quick and easy listening to hydrants and services. The Aqua M-50D features a sensitive microphone capable of detecting even small leaks. Extensions, sometimes referred to as test rods, can be added to the tip allowing convenient access to pipe in awkward locations such as valve and meter pits. This tool can be used by water works personnel for customer service work, checking for proper hydrant shut down after flushing, and general system monitoring. A great tool for plumbers and maintenance personnel that need to identify water leaks.



/ Key Features

- Noise Level Indicator
- Single Knob Operation
- User Friendly Controls
- General Purpose Tool
- No Training Required

/ Aqua M-50 Kit includes:

1. Listening Device with 9 Volt Battery
2. Wired Headphones
3. Carrying case
4. 2x extension



FAST AQUA M-60

Compact device to prelocate and pinpoint leakages



Key Features

- Compact Design With Internal Sensor To Prelocate Leaks
- Quickly And Reliably
- Powerful External Sensor For More Demanding Tasks
- Easy One Hand Operation With Bluetooth Headphones
- Highly Sensitive Piezo-Ceramic Sensor
- Low-Noise Quality Amplifier

Application

Internal Sensor

- Prelocating on plastic and metal pipes
- Ideal for in-house applications and small spaces



External Sensor

- Prelocating with universal accelerometer in deep manholes
- Pinpointing with universal accelerometer and tripod/ extensions



Aqua M-60 Kit includes:

1. Central unit Aqua M-60
2. Holding magnet
3. Transport case
4. Aqua M60 accelerometer
5. Bluetooth headphones
6. Tripod
7. 2x extension
8. Charging accessories



FAST AQUA M-100

Compact geophone for prelocating/
pinpointing purposes

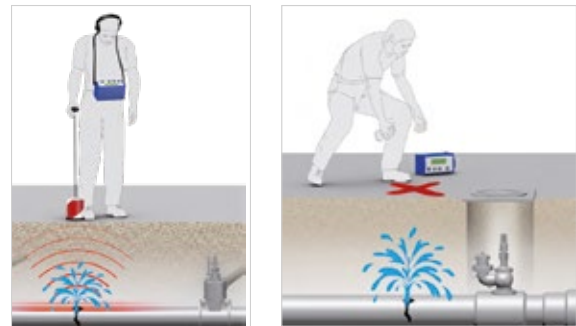


/ Key Features

- Quickly And Reliably Prelocating and Pinpointing Leakages
- Various Measurement Modes: Min / Mean / Gtx / Pwg
- Professional Sound Quality Due To 6 Pre-Set Filters
- Low-Noise Quality Amplifier
- Different Sensors Are Connectable
- Internal Rechargeable Battery

/ Application

- Prelocating the leakage with a testrod or a universal accelerometer
- and extensions / magnet
- Pinpointing with ground microphone or universal accelerometer and tripod
- Searching for pipes in combination with the PWG



/ Aqua M-100 Kit includes:

1. Testrod with extensions
2. Wind protected ground microphone
3. Central unit
4. Universal accelerometer
5. Transport case
6. Tripod
7. Charger
8. Headphones
9. Universal accelerometer with handle



FAST AQUA M-200

*Robust listening device for prelocating/
pinpointing purposes*



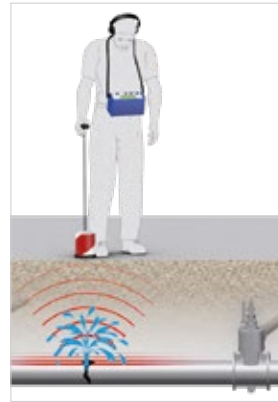
/ Key Features

- Quickly And Reliably Prelocating And Pinpointing Leakages
- Various Measurement Modes: Min / Mean / Gtx / Pwg
- Professional Sound Quality Due To 6 Pre-Set Filters
- Extra Large Lcd To Display The Measurement Values
- Different Sensors Are Connectable
- Internal Rechargeable Accumulator



/ Application

- Prelocating the leakage with a testrod or a universal accelerometer and extensions / magnet
- Pinpointing with ground microphone or universal accelerometer and tripod
- Searching for pipes in combination with the PWG



/ Aqua M-200 Kit includes:

1. Testrod with extensions
2. Wind protected ground microphone
3. Central unit
4. Universal accelerometer
5. Transport case
6. Tripod
7. Charger
8. Headphones
9. Universal accelerometer with handle



FAST AQUA M-300

Intelligent Geophone For Leak Detection



Key Features

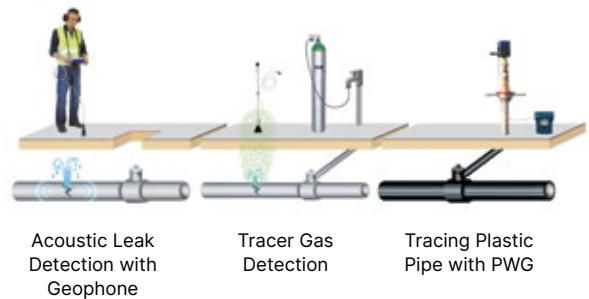
- Simple and Reliable Guidance to the Leak
- Triple Function: Acoustic Tracer Gas Leak Locating and Pipe Detection
- Suitable for All Users: Manual and Automatic Mode
- 256 Free Selectable Filters
- Leak File Recordable and Possibility of Report Editing on PC
- Color Touchscreen, Battery Powered

Application

- Prelocating the leakage with a testrod or a universal accelerometer and extensions/magnet
- Pinpointing with ground microphone or universal accelerometer and tripod
- Searching for pipes in combination with the PWG

Utilization

- Prelocating with Listening Stick or universal microphone
- Pinpointing with ground microphone or universal microphone
- Pinpointing with tracer gas and H2 Sensors
- Pipe searching in conjunction with PWG (see site XXX)



Aqua M-300 Kit includes:

1. Testrod with extensions
2. Wind protected ground microphone
3. Universal microphone with handle and small tripod
4. Universal microphone
5. Central unit
6. Transport case
7. H₂ ground probe
8. H₂ hand probe
9. Headphones
10. Bluetooth Dongle for PipeMic



FAST LOKAL 200 PC

Potable Professional Correlator

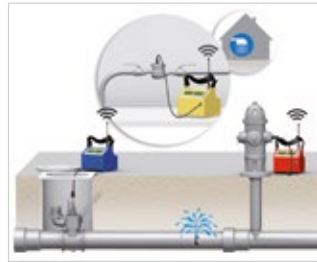


Key Features

- High-Performance Correlator Combined With A Pc Software
- Installed In A Shock-Resistant Abs Case
- An Internal Battery Ensures Extended Operation Time

Application

- Installing the transmitters - MB 6 and sensors - at pre-located fixtures
- 3-point-FFT correlation with third MB 6 (yellow) possible
- Confirming and pinpointing the leakage with a listening device and a ground microphone e.g. Aqua M300, Aqua M200, Aqua M100



Equipment

1. Central unit with Laptop
2. MB 6 blue
3. MB 6 red
4. MB 6 yellow
5. Charger
6. MB 6 accelerometer
7. Hydrophones
8. Car charger



FAST LOKAL 400 CORRELATOR



The Brilliant Combination between Geophone and Correlator



/ Key Features

- Extremely quick data provision thanks to 6-core processor
- 2 functions in one unit: acoustic leakage detection and correlation
- Automatic or manual measurement possible
- Easy-to-understand display and easy operation due to large colour touch-display

/ Application

- Prelocating with test rod, universal accelerometer or MB 6 accelerometer
- Installation of transmitter MB 6 and sensors on prelocated connection spots
- 3-point-FFT-correlation possible with third MB 6 (yellow)
- Confirming and pinpointing the leakage with ground microphone or universal accelerometer

/ Equipment

1. Testrod with extensions
2. Wind protected ground microphone
3. Central unit
4. Universal accelerometer
5. Transport case
6. Tripod
7. Charger
8. Headphones
9. Universal accelerometer with handle



FAST GAS CHECK “TRACER GAS” LEAK DETECTION

Tracer gas leakage detection equipment



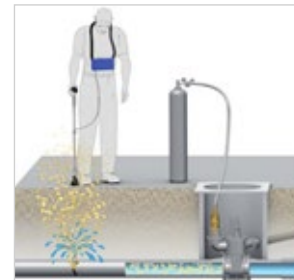
/ Key Features

- Pinpointing A Leakage Irrespective of Leakage-Borne Noises and Of Ambient Noises
- Short Response Time and High Sensitivity of The Hydrogen Sensor
- Easy And Precise Pinpointing of Leakages
- Leakage Detection Method Acknowledged by The Dvgw/ Iwa



/ Application

- Leading the tracer gas (H² N²) into the pipe via the hydrant, a drilled hole or the meter
- Filled and empty pipes can be exposed to gas
- Significant reduction in the quantity of gas applied by leading the gas into the pipe with the Bubble Creator
- Detecting the spot with the highest gas concentration with the GasCheck



/ Equipment

1. Central unit
2. Bell probe with hose
3. Drill hole sounde
4. Transport case
5. Charger
6. Bubble Creator





VERY SMART LEAK DETECTION SENSORS

Pipe Tools is a leading provider of professional tools for water and sewer professionals. We offer a full line of water leak detection, locating and monitoring tools to service many types of end users.

GET IN TOUCH



www.pipetools.com

3



LOGGERS & SENSORS SECTION

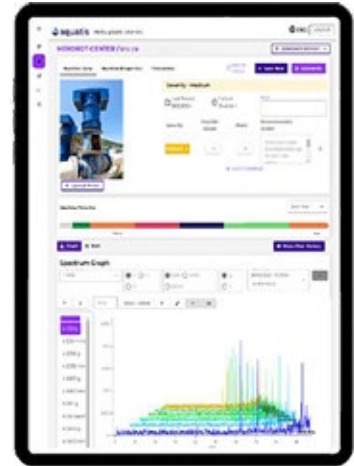
AQUATIS VIBRATION SENSORS FOR MOTOR & PUMP MAINTENANCE



Next level condition based predictive maintenance

/ Who is Aquatis:

Aquatis, merging Mekorot’s legacy with Tisar’s innovation, excels in predictive maintenance for water systems. Our proprietary wireless sensors attach effortlessly to pumps and other rotating equipment, monitoring asset health. Paired with our advanced software and recommendation engine—fruits of years of development—we ensure the continuous flow. Recognizing the pump as the heart of water and wastewater processes, Aquatis performs triage, diagnosing, and prescribing treatment regimens to maintain their health. Trust us to keep your process transparent, and flowing with precision and care.

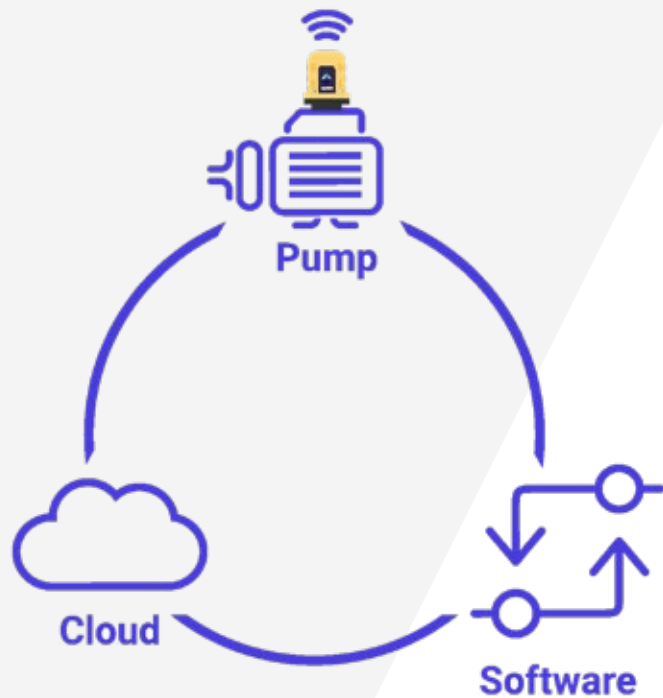


/ Key Features

- Leveraging Human and Machine intelligence
- Finding evolving faults early
- Prescribing the correct treatment regimen for uninterrupted operations
- Prevent catastrophic failures
- Keep the process running fault free

/ System Architecture

- Aquatis wireless sensors
- Transmit to secure cloud
- Big data and machine learning
- Advanced SaaS platform



FAST BI DIRECTIONAL CORRELATING LOGGERS



/ BIDI Logger AZA-OAD *The multi-functional noise logger*

/ Key Features

- To be applied as monitoring system (lift & shift / permanent / network) and as multi-sensor correlator
- Most simple programming with tablet and service master
- Free AZA-OAD software with automatic updates
- Available in various sizes, versions, and types of sensor



/ Equipment:

FAST Lift and Shift Loggers

1. Bidi Logger
2. Transport case
3. Bidi Logger big
4. Holding magnet with angle adapter
5. Telescope bar
6. Bidi Hydro
7. Tablet with AZA OAD Software
8. Servicemaster
9. Charging accessory for Servicemaster
9. Switching magnet
10. Transport box
11. Eyelets
12. Switching magnet



/ Application

- Attaching the loggers at valves, hydrants or in manholes
- Recording minimal noise levels during night-time
- Radio data transmission to the tablet or to the Watercloud
- Detecting leakages with multi-sensor correlation (BIDI Logger)



Bigi logger concept



FAST Stainless-Steel Logger



Single BIDI Logger

FAST DRULO 3 PRESSURE LOGGERS

Precise pressure measurement



/ Key Features & Benefits

- Pressure and temperature measurement with integrated data logger
- 1.8 million measurement values can be saved
- Event controlled measurement: pressure margins can be set
- Time controlled measurement: 5 time intervals can be set
- Free updates and app
- Bluetooth interface for programming and data read-out
- Rechargeable lithium battery with extremely long lifetime (1 charging cycle = 2.5 million measurement values)



/ Applications

- Mounting the Drulo III through ½ inch thread or hydrant clamp
- Programming via keys on the Drulo or via tablet / smartphone and app
- Downloading the data to the tablet / smartphone via Bluetooth
- Displaying the results on the tablet, or data extractable as csv.
- Saving the data in the WaterCloud permanently



/ Equipment



1. Transport case 8x
2. Hydrant claw
3. Charging unit single
4. Mounting aid
5. Transport case
6. Tablet with Drulo App
7. Transport case

FAST ZM ULTRA

Ultrasonic mobile flow meter



/ Key Features

- Ultrasound flow-rate measurement on filled pipes
- Measurements on any customary pipe material feasible
- Data transfer via wifi, gsm, or usb interface possible
- Easy to operate with any wifi-enabled terminal
- Extremely long lifetime with exchangeable accumulator
- Suitable for short-term and long-term measurements



/ Applications

- Installation of the sensors on the pipe (Clamp-on)
- Programming the measurement spot via WiFi connection to the main device
- Starting data recording
- Reading out the data via WiFi or USB, and analysing and processing the data with PC software
- Alternative data transfer to cloudserver via GSM / e-mail



/ Equipment



1. Central unit
2. Wall thickness gauge
3. Insertion sensors
4. Clamp-on sensors
5. Battery
6. Charging unit
7. Tension belts

IJINUS V4 ENVIRONMENTAL LOGGER

Reliable monitoring of your water network



/ Key Features & Benefits

- Enhanced security
- Multimodal communication
- Ease of use
- Multi applications



/ Securing water network data

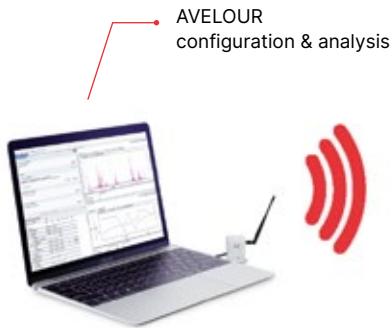
- Data transmitted by the V4 loggers is encrypted in FTPs.
- The information coming from the different sensors is encrypted, allowing the operator to monitor the water network in total security.
- The new generation of V4 loggers is compatible with many communication networks : 4G (LTE-M, NB-IoT), 3G, 2G, MODBUS, 4-20mA, contact.

/ Facilitating the installation and use of loggers Optimize water networks management

- Compact in design, the V4 loggers and sensors can be installed in any environment.
- IP68 rated. Articulated fixing kits are available for easy installation.
- Autonomous in energy, they allow permanent monitoring of the most isolated sites. Wireless configuration for ease of use. The sensors are configured on site by radio (Wiji protocol and Avelour software).



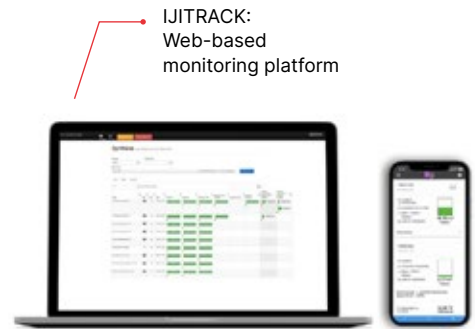
Increased autonomy



AVELOUR configuration & analysis



Large memory capacity
(500 000 measurements)



IJITRACK:
Web-based monitoring platform

Adapting to all uses

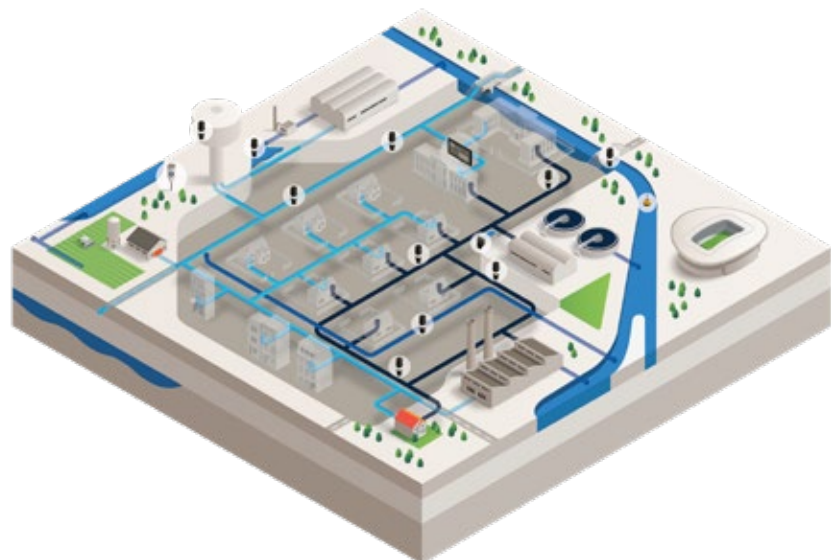
The applications are multiple. Installed on the sewer network or for natural waters, the V4 loggers allow the monitoring of rainfall, levels, flows, physico-chemical parameters, H2S and piezometry for permanent system diagnosis and self-monitoring



Contribute to the diagnosis, automation and performance management of water networks

- The V4 loggers are manufactured to the **highest quality** at the Ijinus site in Mellac, France.
- **Robust and waterproof (IP68 tested at 1 bar for 30 days)**, they can be installed at any point in the water cycle.
- Autonomous recording, measurement and communication of different parameters in **drinking water networks, wastewater networks** and **natural waters**.
- **The collected data** is sent to a **supervision platform** to allow **diagnosis and permanent monitoring of the water networks**.

- Post analysis, the data is used to deliver actionable operational improvements, **to prolong asset life** and preserve the resource.



IJINUS BLUE LP DATA LOGGER FOR WATER APPLICATIONS

The Most Versatile Logger on the Market

Battery powered and compact, this data logger allows you to record many different parameters (pulse count, Modbus flow meter, 4-20mA pressure sensor). The BLUE Logger is also available with a built-in pressure sensor: The BLUE-LP Logger. Both BLUE and BLUE-LP Loggers can be equipped with a cellular communication card (2G, LTE-M or NB-IoT) to send data to a SCADA.



/ Key Features & Benefits

- Quick and easy installation
- Battery powered logger with 500 000 measures memory
- 2x digital contact inputs or counter 100Hz max (Ready for 4 digital inputs)
- 1x 4-20mA analog inputs
- 1x Modbus RS485
- 1x open collector output
- Built-in absolute pressure sensor 0-25 bar option
- Drinking water certification NSF/ANSI 61/372 – MH60087
- Configuration by radio on-site
- Communication option by 2G /4G (LTE-M, NB-IoT)

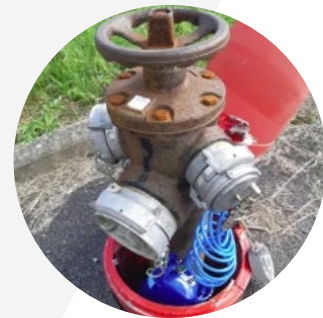
/ Typical Installation Examples



Water meter monitoring with Blue and Itron Cyble sensor



Logger BLUE – Flometer connection



Water pressure monitoring

IJINUS WIRELESS RADAR LEVEL SENSORS

Battery powered level sensors & Wireless communications

The LNU06V4 is one of our level sensors, particularly suitable for liquid measurement in harsh environment. It integrates a logger, a long-life battery and communication options making it fully autonomous. Easy to use and install, the setting is done safely by radio without need of activation.



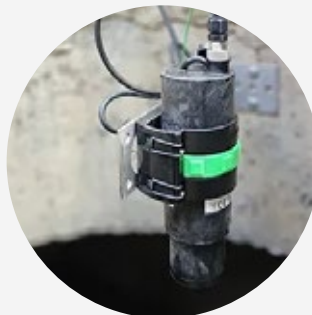
/ Key Features & Benefits

- Wireless setting and data download by radio (Wiji protocol) on-site
- Lithium battery powered, ultra-low-power consumption
- Memory: 500 000 data
- Communication: locally by radio + optional communication card to choose from :2G/3G or 2G/LTE-M/NB-IoT
- Inputs: 1 external power supply (5Vcc...30Vcc), 2 Contacts 100Hz, 1 Modbus
- Outputs: 1power supply (internal battery or switch), 1 open drain, 1 Modbus
- Enclosure rating IP68 (1 bar/30 days)
- Conversion tables and formulas (water height, Flow, volume)

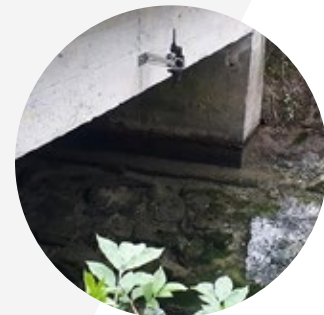
/ Typical Installation Examples



adar water level sensor



Flood monitoring and warning system case study



Monitoring water tables and rivers

IJINUS H2S SENSOR AND LOGGER

Battery powered level sensors & Wireless communications

This sensor integrates a logger, communication, energy, the H2S sensor while maintaining a long autonomy. The measurement is performed by an electrochemical cell, the measuring head is easily interchangeable on-site and embarks its calibration.

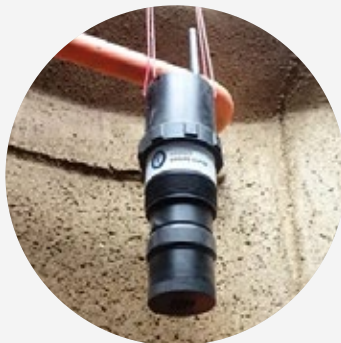
The sensor can be used either in conventional diagnosis in data acquisition or in a communicating version with choice of the wireless communication mode: Radio, SMS, GPRS, FTP, to various SCADA and FTP servers (CSV file format also available).



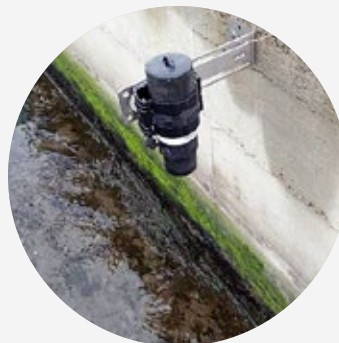
/ Key Features & Benefits

- Measuring range : 0-2000ppm
- Wireless setting and data download by radio on-site
- Communication : locally by radio + optional communication card: 2G/4G (LTE-M/NB-IoT)
- Memory: up to 500 000 measures
- Logger enclosure rating IP68
- Replaceable lithium battery powered

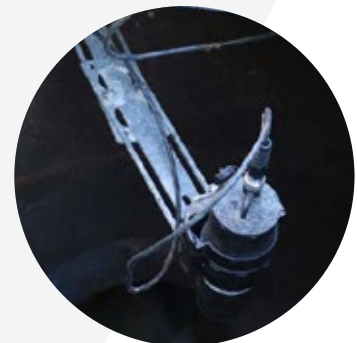
/ Typical Installation Examples



LogazV4-H2S



Example of installation with a mounting plate



Example of installation with two mounting plates

IJINUS WIRELESS OVERFLOW DETECTOR PHONE APP

Capacitive overflow detector allowing reliable and unrivalled detection of water levels and overflows in the most difficult conditions



/ Key Features

- Air-referenced capacitive technology
- Settings configuration via Bluetooth BLE using the OverFlow mobile App.
- No activation of the detector is required.
- Modbus output, pulse open drain, NO, NC
- Secure spill recording even in the event of a power cut, thanks to battery and internal memory for 100 events
- PLC and process compatible
- Management and monitoring of sensor fouling
- IP68 grade housing
- Instrumentation of storm water overflows, wastewater and natural water networks

IJINUS SENSOR ATTACHMENTS FOR LOGGERS



Wireless Data Logger

Dissolve Oxygen

pH-Redox

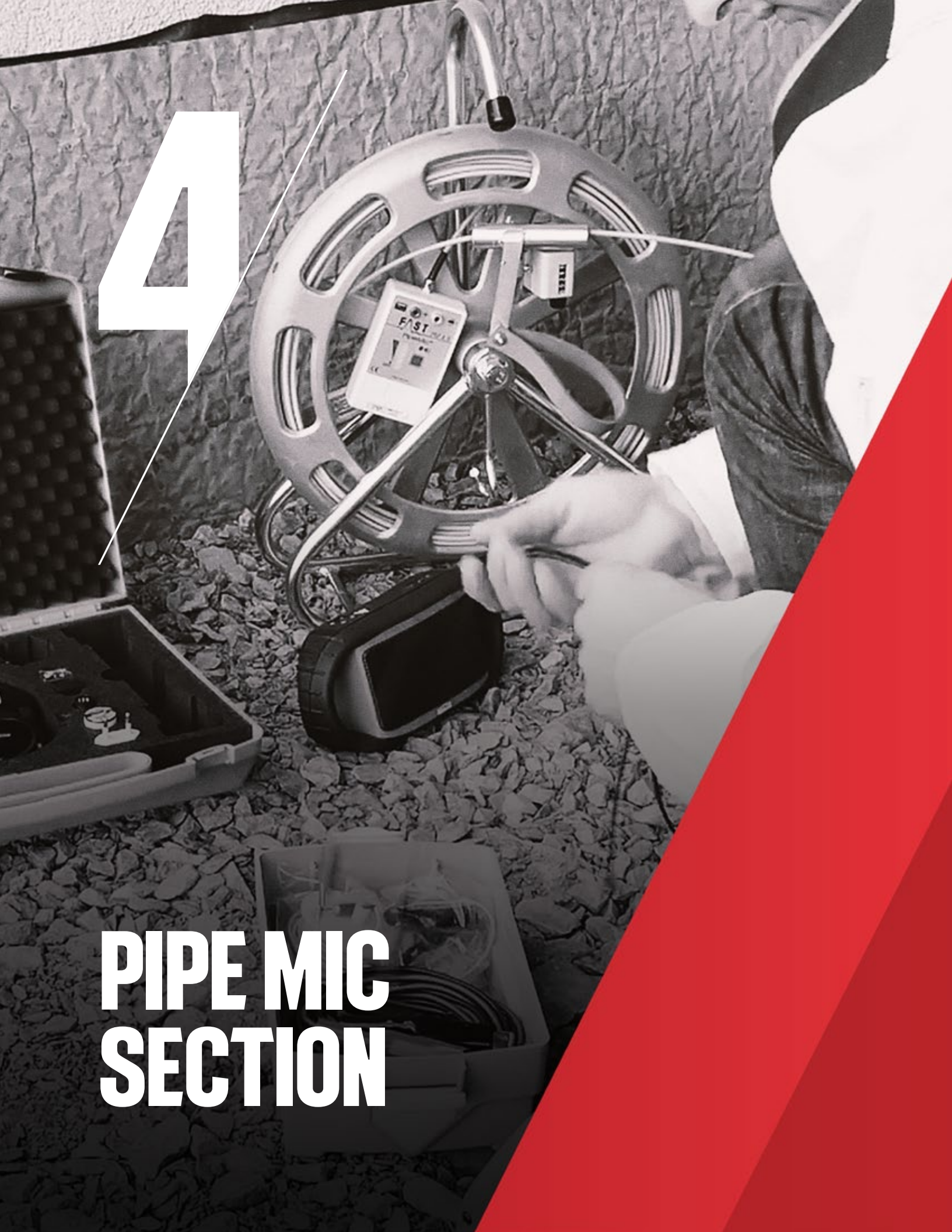
Turbidity

Conductivity

Inductive Conductivity

Oxydo reduction potential

4



PIPE MIC SECTION

FAST PIPEMIC FLEX

Precise Leakage Detection

The PipeMic Flex is ultra flexible, can get around several tight bends and fits even in the smallest pipes. Ideal for in-house piping and house connections.

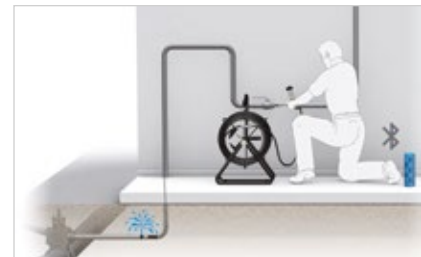


/ Key Features

- Detects leaks even in challenging conditions
- Ultra flexible fiber glass cable with 4.5 mm diameter applicable with several pipe bends in a row
- **3-in-1 function:** acoustic leakage detection + pipe detection + end detection

/ Application

- Inserting the probe through the meter, the manhole, or with the insertion guide into the pressurized pipe
- Pinpointing the leakage through maximum noise indication
- Connecting the pipe locator with the banana plug and conducting the search for the pipe / end detection
- Integrated disinfection appliance for safe usage



/ Equipment

1. Central unit
2. Insertion guide
3. Disinfectant
4. GEKA couplings with female and male threads
5. 9 V Battery
6. Bluetooth speaker
7. Bluetooth headphones
8. Accessory case
9. Hose piece M/Flex
10. 45° T-piece, 190 mm, suitable for water meter space
11. Charging accessories
12. Bluetooth dongle for Aqua M300
13. Pipe locator (different models available)
14. Banana cable for connecting PipeMic® with pipe locator



FAST PIPEMIC M

Precise Leakage Detection



The allrounder among the pipe mic's® –
Designed for home connections and small
distribution lines

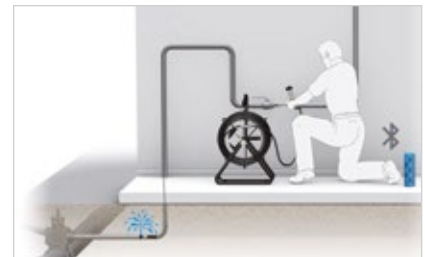


/ Key Features

- Locates leakages with unprecedented precision
- Available with up to 90 meters of cable
- **3-in-1 function:** acoustic leakage detection + Pipe detection + End detection

/ Application

- Inserting the probe through the meter, the manhole, or with the insertion guide into the pressurized pipe
- Pinpointing the leakage through maximum noise indication
- Connecting the pipe locator with the banana plug and conducting the search for the pipe/end detection
- Integrated disinfection appliance for safe usage



/ Equipment

1. Central unit
2. Insertion guide
3. Disinfectant
4. GEKA couplings with female and male threads
5. 9 V Battery
6. Bluetooth speaker
7. Bluetooth headphones
8. Accessory case
9. Hose piece M/Flex
10. 45° T-piece, 190 mm, suitable for water meter space
11. Charging accessories
12. Bluetooth dongle for Aqua M300
13. Pipe locator (different models available)
14. Banana cable for connecting PipeMic® with pipe locator



FAST PIPEMIC XL AND XXL

Precise Leakage Detection

Detects leakages with unprecedented precision

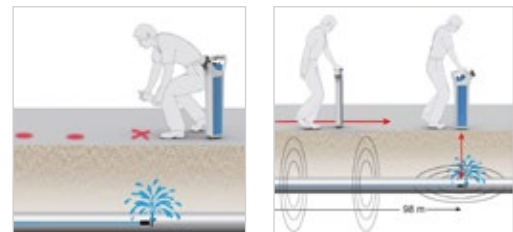


Key Features

- 9-millimeter fibre optic cable can be pushed on longer distances in larger pipes
- Available with up to 300 meters of cable
- 3-in-1-function:
Acoustic leakage detection + pipe detection + end detection

Application

- Inserting the probe through the manhole/flange, or insertion guide into the pressurized pipe
- Determining the position of the leakage through maximum noise indication
- Connecting the pipe locator with the banana plug and conducting the search for the pipe/end detection
- Integrated disinfection appliance for safe usage



Equipment

1. Main unit XL/XXL
2. Insertion guide
3. Disinfectant
4. GEKA couplings with female and male threads
5. 9 V Battery
6. Bluetooth speaker
7. Bluetooth headphones
8. Accessory case
9. Hose piece M/Flex
10. 45° T-piece, 190 mm, suitable for water meter space
11. Charging accessories
12. Bluetooth dongle for Aqua M300
13. Pipe locator (different models available)
14. Banana cable for connecting PipeMic® with pipe locator



5



**PIPE
LOCATING
SECTION**

FAST PWG II PULSE WAVE GENERATOR



Finding pipes under difficult condition

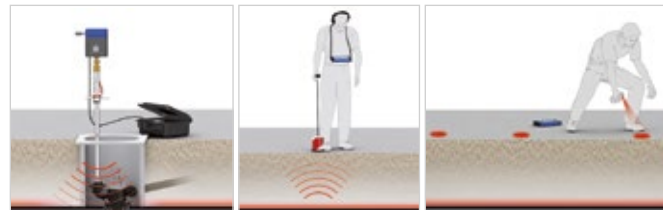


/ Key Features

- Locating all kinds of pipe
- Pipe sections detectable for up to 600 metres
- Operates from a minimum pressure of 2 bar
- Simple installation thanks to GK quick coupler

/ Application

- The PWG is attached to a hydrant or to a in-house installation
- An acoustic pulse travels along the pipe
- The pulse is detected with listening devices of the Aqua M series and with the ground microphone



/ Equipment

1. PWG in case
2. Central unit
3. Short and long piston
4. GEKA couplings with female and male threads
5. Charger
6. Transport case



FAST MD-100 METAL DETECTOR



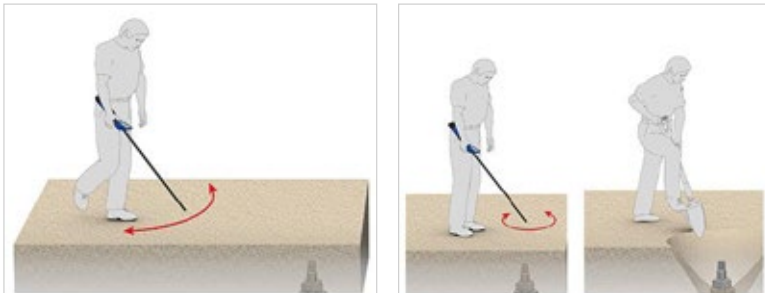
Ferromagnetic metal detector

The MD-100 sets a new benchmark when it comes to detection of metallic objects. Even the smallest parts can be detected quickly, easily and precisely. The MD-100 responds to ferromagnetic objects whereas non-metal objects are not indicated.



/ Application

- Switch on the device with the foil keys and adjust sensitivity and volume
- Displaying the measured field strength via LCD and acoustic noise
- The CAL functions allow to fade out disturbing signals
- Detecting the requested object through field strength maximum
- 50 Hz indication for electricity cables



/ Key Features

- Unique ergonomics for convenient long-term usage
- High sensitivity allows to detect even smallest and deep objects without any problem
- Easy-to-operate through foil keys and LCD display

/ Equipment

1. MD 100
2. Transport bag
3. Spare batteries



SCHONSTEDT GA-52CX MAGNETIC LOCATOR

Power and precision magnetic locator

Explore the remarkable power and precision of Schonstedt Magnetic Locators in pinpointing buried iron assets, ranging from tiny property markers to massive tanks. The GA-52Cx Locator detects the magnetic field of iron and steel objects, with unmatched sensitivity. Designed for one-hand operations, the On/Off-Sensitivity and Volume controls are located on the underside of the cover. This provides easy access, protects the knobs and contributes to their overall ruggedness and dependability.



SCHONSTEDT

/ Key Features

- High Sensitivity with 5 Levels
- Audio Output
- No response to aluminum, brass, or copper
- HeliFlux® sensors
- Modular construction; high performance components
- 7-year warranty



/ GA-52Cx Standard Equipment

- Carrying Case (p/n: 206038)
- Two 9V Batteries (in unit)



SCHONSTEDT GA-72CD MAGNETIC LOCATOR

Audio & Visual Output for Greater Accuracy

The GA-72Cd has more benefits, having a display that indicates polarity change detection – an essential aid to centering buried object orientation, Peak or Null signal indication and a choice of audio output, either volume or frequency based.

The GA-72Cd Locator detects the magnetic field of iron and steel objects. It provides audio detection signals that peak in frequency when the locator's tip is held directly over the target. The GA-72Cd has the option of nulling or peaking

SCHONSTEDT



/ Key Features

- Audio & Visual Output
- Battery & Sensitivity Indicators
- Choice of Two Audio Modes: Peak or Null response
- 4 Levels of Sensitivity
- Most Popular for UXO and Demining Applications
- 3-digit LCD readout
- Signal Strength and Polarity Indications
- No response to aluminum, brass, or copper
- HeliFlux® sensors
- Modular construction; high performance components
- 7-year warranty



/ GA-72Cx Standard Equipment

- Carrying Case (p/n: 302145)
- Two 9V Batteries (in unit)



SCHONSTEDT GA-92XTD MAGNETIC LOCATOR

Retractable, Portable Locator

The GA-92XTd makes locating ferrous objects faster and easier with one-hand operation and both audio and visual signals. Detects property markers, manholes, valve boxes, and more up to 16 feet underground. Lightweight and compact, it clips to your hip for easy carrying on the job site—perfect for professionals who need efficiency without the bulk.

SCHONSTEDT



/ Key Features

- Most portable
- Smallest for easy storage
- Membrane Switch for Single-Handed Operation
- Battery Replacement in grip (does not expose electronics)
- Audio & Visual Output
- Battery & Sensitivity Indicators
- Signal Strength and Polarity Indications
- No response to aluminum, brass, or copper
- HeliFlux® sensors
- Modular construction; high performance components
- 7-year warranty



/ GA-92XTd Standard Equipment

- Carrying Case (p/n: XT50000)
- Holster (p/n: PC10012)
- One 9V Battery (in unit)

SCHONSTEDT MAGGIE®

Precision Detection Made Easy

Maggie® combines improved ergonomics, higher sensitivity with a visual display, and membrane controls in a tough ABS case. Maggie® detects ferromagnetic objects by measuring magnetic field differences between two sensors. It provides audio, bar graph, and numeric displays for signal strength, plus polarity indicators for precise targeting. Use audio alone or combine with visual feedback for faster, more accurate location and orientation of buried objects.



SCHONSTEDT®



/ Key Features

- Highest Sensitivity
- Ergonomic & Durable
- Dust & Water Resistant (Rated IP54)
- Easy access battery removal
- Expanding bar graph indicates polarity (positive or negative) and relative signal strength
- HeliFlux® sensors
- Modular construction and high-performance components
- Includes a soft-case and sling for ease of carrying through rough terrain, hands-free
- 7-year warranty



/ Maggie® Standard Equipment

- Padded Carrying Case with Strap (p/n: MA50000)
- One 9V Battery (in unit)

SCHONSTEDT REX PIPE & CABLE LOCATOR KIT

SCHONSTEDT

Ultra-Portable & User-Friendly

Designed for maximum portability, Rex features a slim, ultralight transmitter and a retractable receiver for easy handling. This multi-frequency locator offers advanced performance at a price comparable to single-frequency models. Rex is recommended for locating all types of underground utilities: water and sewer, electric, telecom, and gas. The sleek design of the transmitter is less than 2" thick and weighs less than 4 lbs. At slightly over 7 lbs., the entire system fits easily into a custom shoulder bag.



/ Key Features

- Ultralight Design: Receiver + Transmitter = Under 7lbs
- Compact & Portable: Receiver retracts for easy carrying
- Multi-Frequency Versatility: 512 Hz, 33 kHz and 82 kHz, plus 50/60 Hz passive and 512 Hz sonde detection
- Transmitter comes equipped with rechargeable batteries
- Schonstedt's 3-year warranty

/ Rex Kit Accessories:

- Standard Headset – p/n: XT40000
- Clamps:
 - 2" Inductive Signal Clamp – p/n: TM60000
 - 5" Inductive Signal Clamp – p/n: TM60001
 - 7" Inductive Signal Clamp – p/n: TM60002
- Heavy-Duty Clips:
 - Large Heavy-Duty Clips – p/n: TM70001
 - Small Heavy-Duty Clips – p/n: TM70002
- 512 Hz Sonde – p/n: TM50910
- Transmitter Battery Replacement Kit (includes Spare Battery, Spare Charger, & 4 Screws) (p/n 600072)
- Components also sold separately: Spare Battery (p/n FD50040) & Spare Charger (p/n 600071)

/ Rex Standard Equipment

- Rex Receiver: 1 – 9V Alkaline Battery (in unit) (p/n: B11013)
- Rex Transmitter: 1 – Rechargeable NiMH pack (12V) (in unit) (p/n: FD50040)
- Plastic Holster
- Conductive Clip Assembly (p/n: TM70000) which includes Standard Conductive Clips — C91010 (Red) and C91011 (Black)
- Soft Carrying Case
- Ground Stake
- AC/DC Power Adapter for charging Transmitter (p/n: FD50100)
- Welcome Placard to download the manual, register unit, watch training videos

SCHONSTEDT MPC-REX COMBINATION KIT

SCHONSTEDT 

Pipe and cable and Magnetic Locating

The MPC-Rex Combo Kit offers both pipe & cable and magnetic locating. This kit includes a GA-92XTd Magnetic Locator and a Rex Multi-Frequency Pipe & Cable Locator and accessories. The entire system fits easily into a custom shoulder bag. The MPC-Rex Combo Kit is the one kit designed for all locating professionals in a range of utility industries.



/ Optimized for

- Water & Sewer
- Gas
- Electric
- Telecomm

/ MPC-Rex Combo Kit include

- Rex Receiver with one 9V Battery (in unit)
- Rex Transmitter with Rechargeable NiMH pack (12V)(p/n: FD50040)
- GA-92XTd Magnetic Locator with one 9V Alkaline Battery (in unit)
- 2 Plastic Holsters
- Conductive Clip Assembly (p/n: TM70000) which includes Standard Conductive Clips — C91010 (Red) and C91011 (Black)
- Soft Carrying Case
- Ground Stake
- Small Heavy-Duty Clip (p/n: TM70002-1)
- Large Heavy-Duty Clip (p/n: TM70001-1)
- AC/DC Power Adapter for charging Transmitter (p/n: FD50100)



SCHONSTEDT U-LOCATE PIPE & CABLE LOCATOR KIT

A versatile, high-quality solution, suitable for a wide variety of difficult locating tasks

u-LOCATE allows you to quickly and accurately locate underground utilities, helping prevent costly damages, utility strikes, and service outages.

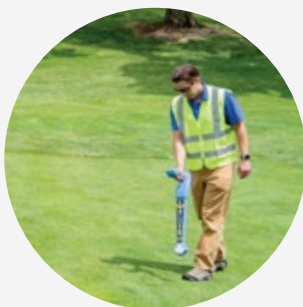
SCHONSTEDT



/ Key Features

- Avoid hitting or damaging buried utilities
- Robust locator designed for all types of weather and environments
- Easy to use, right when you need it
- Left/right arrows and audio signals help guide you towards the buried utility
- Discriminates between utilities and other buried materials – locate the utility you want
- Depth estimation at the press of a button
- Minimize downtime with online training videos and support
- Ideal for 811-mark verification and Private Locates.
- Passive mode enables the safe identification and tracking of power cables carrying current.
- Accurate power cable identification
- Left / right guidance arrows on the display, allow fast and easy location and tracing of buried utilities
- High frequency signal ideal for water, gas and telecom networks
- Long distance tracing of buried utilities and pipelines
- Depth estimation enables tracing of utilities in both horizontal and vertical planes

/ Application



SCHONSTEDT FLEXITRACE™ SONDES AND PUSH RODS

SCHONSTEDT™

Accessory for tracing non-conductive utilities

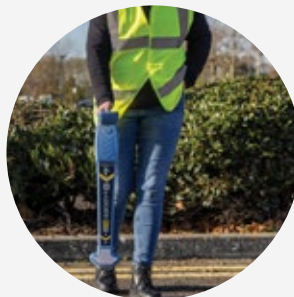
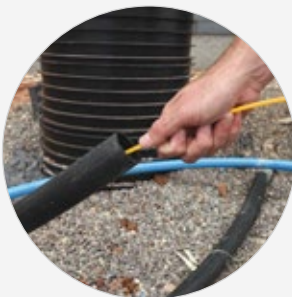
Compatible with a range of Schonstedt pipe & cable locators, FlexiTrace™ is a flexible, conductive rod with a sonde at the end. When one transmitter lead is connected to FlexiTrace™, the conductive rod can be used to trace non-metallic pipes. When both leads are connected, the end behaves like a sonde to help locate blockages. FlexiTrace™ is used with a Schonstedt Pipe & Cable Locator to find and trace small diameter, non-metallic pipes and other non-conductive utilities. The entire length of FlexiTrace™ can be detected from above ground.



/ Key Features

- Rod diameter of 0.2" (5mm)
- Length of up to 263' (80m)
- Pinpoints the location of a blockage
- Traces the route of non-metallic pipes or conduits
- The FlexiTrace™ reel holds 164' (50m) or 262' (80m) of small diameter rod. The flexible rod can be energized by a transmitter and inserted into pipes as small as 0.5" (12mm).

/ Application



SCHONSTEDT RD510 LOCATOR AND PULSED WATER TRANSMITTER KIT

Precision Leak Detection

Water leaks cause significant water loss and higher costs. The RD510, developed with Radiodetection, helps locate leaks up to 16ft (5m) deep, even in non-metallic pipes. Its acoustic sensor and control unit isolate and amplify leak sounds for fast, accurate detection, making maintenance and repairs more efficient.

SCHONSTEDT



Key Features

- User-Friendly Control: Easy-to-use, hand-held control unit with color touch screen.
- High Sensitivity Microphone: Ground microphone with a telescopic pole for precise detection.
- Comfortable Headset: Equipped with a standard audio jack for seamless audio clarity.
- Versatile Metal Spike: Extends usability on soft ground conditions.
- Noise Reduction: Band pass filter to minimize background noise interference.
- Pulsed Water Transmitter: Provides a traceable pulse to the target pipe.
- Adaptable: Pulsed Water Valves to suit most environments (4 or 10 bar).



Application



RYCOM MAGNASTICK™ MSL™ MAGNETOMETER



Am vendit unt harchicid

Magnastick™ MSL™ detects ferromagnetic objects by sensing their magnetic fields, unaffected by non-ferrous materials like brass, aluminum, or copper. Its dual sensor coils offer high sensitivity, with an always-on peak mode that increases audio signals as objects are approached. The digital display shows signal strength, polarity, and battery status.

Built for durability, the water-resistant handle features easy-to-use sensitivity controls, while the waterproof aluminum sensor tube locates ferrous objects underwater.

The Auto-Null button simplifies detection near large metal objects, resetting the device without reducing sensitivity. Each unit includes a digital receiver, user manual, and soft carrying case.

/ Key Features

- Excellent for Locating:
 - PK Nails
 - Iron Pipes
 - Steel Drums
 - Well Casings
 - Masonry Nails
 - Surveyors Markers
 - Valve and Curb Boxes
 - Cast Iron Lines
 - Manhole Covers
- Locate ferrous objects under snow, earth, and even water
- Water resistant and weatherproof design for years of field use
- Auto-Null feature rejects non-target materials for easier locating
- LCD screen displays signal and battery strength



RYCOM PATHFINDER LOCATOR KIT



Built on a proven design, the Pathfinder PLS® combines advanced Pathfinder SAF Technology™ with FrequencyFlex™, offering precision and versatility for locating underground utilities with minimal interference. Its intuitive operation and rugged construction make it the ideal solution for accurate and efficient utility locating in any environment.



Key Features

- FrequencyFlex™: offers 1000+ programmable frequencies crafted to individual locating requirements. FrequencyFlex™ allows push-button field customization at the job site;
- 8 Locating Modes: the multi-channel processor allows for simultaneous field detection from a multiple antenna array ensuring accuracy;
- PathTraq™ Mobile Application: downloaded to your phone, Rycom's PathTraq™ is a GPS & Data Logger application to provide real-time coordinate logging of field locations;
- Automatic Impedance Matching Technology: maximizes your transmission range while minimizing power consumption;
- PathLink™ Technology: remotely controls your transmitter from the receiver to more than 400 yards;
- High-Contrast LCD Interface with Backlight: guides the operator to the target location by providing all relevant data including continuous depth, current measurement, signal strength, and directional arrows;
- Constant Depth & Current Measurement: real time updates on line depth and signal condition;
- 84 wH Lithium-Ion Batteries: lighter weight design and longer operating life;
- 4-year warranty: registration extends warranty to 4 years;
- Made in the USA since 1946: engineered in our Raytown, MO headquarters for more than 70 years;



The KIT include:

- Pathfinder receiver
- Pathfinder transmitter
- Direct Connection Cord
- Ground Rod
- Protective Carrying Case
- Batteries
- AC& DC Battery Chargers
- Operations Manual



RYCOM EMS LOCATOR FOR MARKER BALLS

RYCOM
instruments. inc.

The 8890 & 8891 Utility Marker Locators offer a cost-effective solution for detecting buried utility markers without requiring expensive, redundant equipment. Designed for professional locators, these devices accurately identify eight major utility markers – power, water, sewer, gas, telco, CATV, reclaimed water, and Rycom’s unique marker – in one easy-to-use unit. The 8891 model can be customized with specific marker frequencies to meet individual needs.

/ Key Features

- Multi-Frequency Detection: 8 frequencies locate standard utility markers for Power, Telco, CATV, Water, Sewer, and Gas;
- Scan feature highlights markers in the vicinity;
- Custom Frequency Options (8891): Tailor frequency combinations to specific applications;
- Scan Feature: Quickly identifies nearby markers, verifies frequency, and prevents misreads;
- Weatherproof membrane buttons;
- Digital marker depth estimate
- Audible Peak Tones & Digital Display: Provides clear feedback on marker proximity and frequency;
- Compact & Ergonomic Design: Foldable antenna wheel for easy storage and transport;
- Automatic Power-Off: Extends battery life with a 10-minute shut-off function;
- Backlit digital display for low-light reading;
- Compact design folds for easy storage;
- Made in the U.S.A.;



RYCOM SONDES (512 Hz, 8KHz, 33 KHz)



Self-contained signal transmitters (Sondes) are used to trace the path of non-metallic pipes and locate line blockages in clay, cast iron and other non-conductive structures. Emitting a signal that is detectable up to 25 feet in the air and 10 feet in cast iron, Rycom Instruments® Sondes provide locators with an unbeatable range at a low price.

Sondes are programmed with a single matched frequency that is detectable by all Rycom Instruments® locating receivers with a matching frequency. Made of high-density PVC plastic, each sewer and pipe Sonde is designed to be highly durable.



/ Key Features

- 25-foot range
- Exceptional cast iron penetration with a 13-foot signal range
- Threaded end caps for attaching to push rods
- Rugged design with potted components in an impact resistant compound
- Rounded heads and tails prevent hang-ups
- Operates for over 4 hours on one AA battery
- Multiple frequencies designed to work with all common locators
- Made in the U.S.A.

RYCOM STICK V3 WITH FE LOCATOR



The Stick combines advanced Pathfinder SAF Technology™ with a durable, weatherproof design for precise utility locating in any environment. Its multiple frequencies from 50Hz to 82kHz adapt to various locating needs, minimizing interference and enhancing accuracy. With an intuitive LCD display, audio feedback, and automatic impedance matching, The Stick ensures fast, reliable results for both short and long-distance locates. Built with rugged aluminum housing, it's designed to withstand tough field conditions.

Key Features

- Multiple frequencies options available on both transmitter and receiver
- Multiple active frequencies allow accurate tracing in congested areas
- 3-watt transmitter for direct connection, transmitter and coupled induction
- Digital LCD displays on both transmitter and receiver
- Push button digital depth
- Weatherproof membrane buttons
- Peak mode & Left-Right Guidance mode
- Ferrous metal detection
- Made in the U.S.A.



RYCOM CLAMPMITTER TRANSMITTER



The CLAMPMITTER™ is a unique tool for inductive coupling. This self-contained inductive transmitter increases productivity, promotes safety and simplifies locates by condensing the transmitter and inductive coupler into one cordless package. Whether climbing down a manhole or accessing a utility box, the Clammitter is an easy alternative to suiting up with a full transmitter and wired coupler.



/ Key Features

- Eliminates the risks of hauling heavy transmitter boxes down aging manhole ladders
- Removes the hazards of tripping/ falling over long cords in unstable job sites
- Lends itself as a back-up transmitter when your line transmitter's battery goes down in the field
- Allows the user to complete more than one locates at once
- Removing the cord permits the user to easily lock the unit inside manholes and switchgears, eliminating theft risks and the need for more than one user to stand watch
- Recharges with ease using a standard USB supply
- Affordable price point to add to budgetary plans
- Made in the USA

/ Application



6

**SEWER
AND DRAIN
CLEANING
EQUIPMENT**

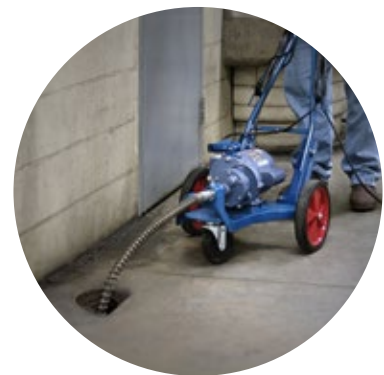


ELECTRIC EEL MODEL C

Sectional Drain Clean

Electric Eel

The Model C Sectional Drain Cleaner is the best unit available for tougher blockages such as tree roots and for longer runs in main sewer lines. The Model C runs up to 200ft. of 1 1/4" dual cables, with self-feeding action, that are available in 8ft. or 10ft. sections for cleaning 3-10" diameter lines. The standard 1/2HP motor spins the cable at 500 RPM for maximum cleaning power and can be upgraded to a 3/4HP or 1HP motor for longer runs.



Key Features

- Single-operator functionality reduces labor costs and operation time.
- Foldable handle ensures easy transportation, compact storage, and convenient use in confined spaces.
- Custom-designed gearbox enhances durability, lowers costs, and ensures easy access to spare parts.
- Ergonomic carry handle provides optimal balance and effortless transport.
- Heavy-duty, fully adjustable safety clutch minimizes cable and tool breakage while offering overload protection.
- Lightweight yet durable cast aluminum base with built-in Ground Fault Circuit Interrupter (GFCI) for enhanced safety.
- Choice of 1/2 HP, 3/4 HP, and 1 HP motor options to suit various applications.
- Patented, self-feeding dual cable requires no manual handling, operates at 500 RPM, and delivers superior performance in clearing blockages compared to traditional drum machines.
- Outer coil with right-hand winding and inner coil with left-hand winding prevent cable twisting and loss inside pipelines, while the open-spaced 1-1/4" outer coil facilitates debris removal.
- Modular cable design available in 8' and 10' sections for easy replacement, suitable for small spaces, with options in 1/2" regular or 5/8" heavy-duty inner cable diameters.
- Cable construction effectively scrapes and removes deposits in pipelines ranging from 3" to 10" in diameter, with lengths up to 200 feet.
- Quick-connect Snap-Lock couplings provide secure attachment without loose pins, nuts, or set screws, with stainless steel drive and connector pins for added durability.

ELECTRIC EEL MAINLINE TOOLS AND ACCESSORIES



All tools & accessories listed below are compatible with **Electric Eel Models C, D-5, R, RF, 325, 800** and work with 8' and 10' dual cables (all types) and 5/8" and 3/4" continuous cables.

INITIAL OPENING TOOLS

- A-1DC 1 7/8" Diameter for 3" or larger pipeline
- A-2DC 2 3/8" Diameter for 4" or larger pipeline
- A-2-3DC 3" Diameter for 4" or larger pipeline
- A-2-3DCS 3" Ice chopping tool for 4" or larger pipelines
- HDD-2T 2 3/8" Spear point on 12" flexible spring for 4" or larger pipeline

HEAVY-DUTY ROOT SAW TOOLS

- HDD-3S For 3" pipeline
- HDD-4S For 4" pipeline
- HDD-5S For 6" pipeline
- HDD-7S For 8" pipeline

GREASE TOOLS

- U-3 For 3" pipeline (also available in Heavy duty)
- U-4 For 4" pipeline (also available in Heavy duty)
- U-6 For 6" pipeline (also available in Heavy duty)
- U-4H Heavier duty for 4" pipelines
- UC3 For 3" pipeline

FLEXIBLE SPRING TOOLS

- HDD-U3 12" Spring with U3 blade for 3" pipeline
- HDD-U4 12" Spring with U4 or HD blade for 4" pipeline

EXPANSION TOOLS

- EX-4A For 3" – 4" lines
- EX-6A For 4" – 6" Lines
- EX-8A For 6" – 8" lines

SLUDGE BUSTER TOOLS

- HDD-3S-P 2 3/8" Heavy duty sludge pusher for 3" pipelines
- HDD-4S-P 3" Heavy duty

- sludge pusher for 4" pipelines
- HDD-4S-31/2-P 3 1/2" Heavy duty sludge pusher for 4" lines
- HDD-5S-P 5" Heavy duty sludge pusher for 6" lines

FINISHING TOOLS

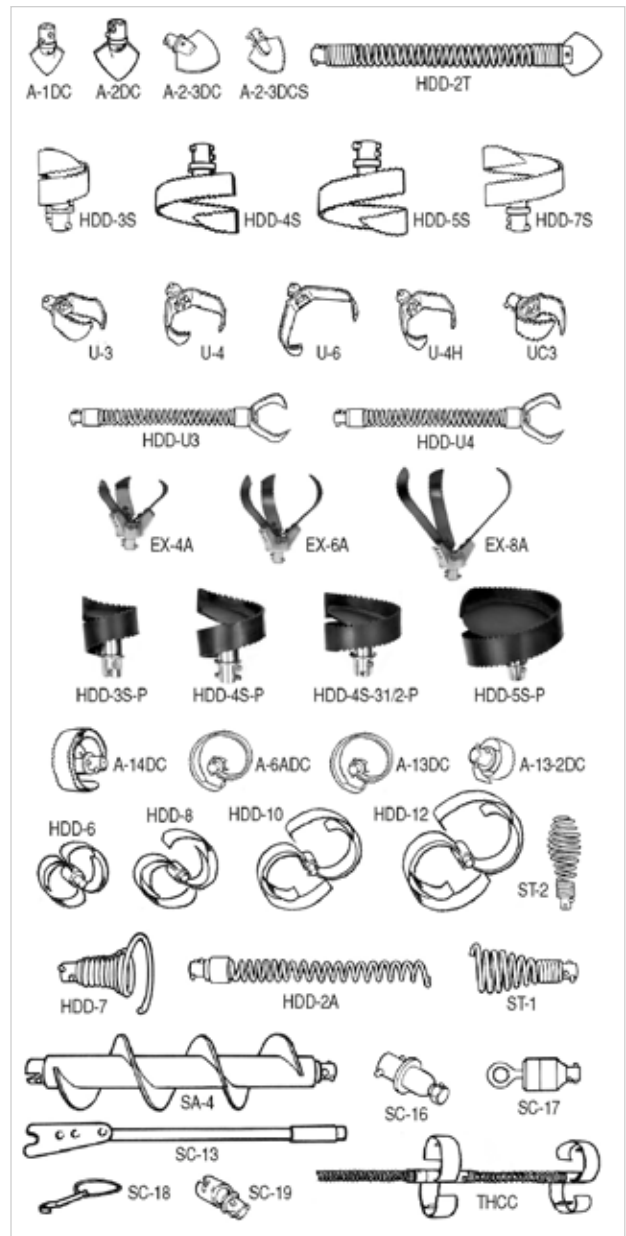
- A-14DC 3 1/2" Diameter tool for 4" or larger pipelines
- A-6ADC 5" Diameter for 6" or larger pipelines
- A-13DC For 4" conductor lines
- A-13-2DC For 3" conductor lines
- HDD-6 "S" Shaped for 6" lines
- HDD-8 "S" Shaped for 8" lines
- HDD-10 "S" Shaped for 10" lines
- HDD-12 "S" Shaped for 12" lines
- ST-2 Bulb shaped tool for 4" plastic pipeline

RETRIEVING TOOLS

- HDD-7 3" Tool for retrieving objects from pipeline
- HDD-2A Longer, thinner right hand wound retriever
- ST-1 Right hand wound retrieving tool

ACCESSORIES

- SA-4 Sand auger tool - Affix a spade-type tool for use on culverts under roadways
- SC-13 Feeding tool for use on "P" traps
- SC-16 Torque wrench adapter
- SC-17 Swivel cable puller for threading cable through pipeline
- SC-18 Spanner wrench for disconnecting cables/tools
- SC-19 Drop head adapter - provides swivel joint between cleaning tool and cable
- THCC Connector cable for connecting tools in tandem (tools not included)



ELECTRIC EEL MODEL E



Sectional Drain Clean

Professionally Engineered to Clean 1-1/4" To 3" Diameter Pipelines Up To 75 Feet.

Designed specifically for the rental industry, the Model E has several unique features such as a steel inner-drum, epoxy coated cage, cord wraps, and a rear bar for motor protection. \

Unit holds up to 75 Ft. of 3/8" or 1/2" diameter "galvanized aircraft wire" inner core. Cleans 1 1/4" – 3" diameter lines. An optional 2-wheel dolly is available for easy transport.



/ Key Features

- Rear bar design shields the motor and enables flexible two-position operation.
- Conveniently placed brackets secure the power cord for safe, hassle-free transport.
- Built-in Ground Fault Circuit Interrupter (GFCI) with a 20 ft. power cord enhances operator safety.
- Air-operated foot switch allows hands-free cable operation, improving control and efficiency.
- Heavy-duty tubular frame ensures stability and balance during operation.
- Epoxy powder-coated drum resists corrosion from caustic drain-cleaning chemicals.
- Cast aluminum bracket with bearing-supported guide tube for smooth cable guidance.
- Cable options in 3/8" or 1/2" certified music wire with galvanized aircraft wire inner core for extended lifespan.
- Innovative inner drum design prevents cable buckling during operation.
- Built-in drum-shaft slip clutch reduces cable and tool breakage while offering overload protection.
- Impact-resistant belt guard provides added safety and can be easily removed with a thumb screw for quick maintenance.
- Powerful 1/3 H.P. reversible motor delivers reliable cleaning performance.
- Convenient zipper tool bags keep essential tools easily accessible.



ELECTRIC EEL MODEL N

Electric Eel.

Drum Machine

The Model N Drum Machine cleans household drains, industrial waste lines, vents and downspouts with ease.

The Model N Drum Machine's features an enlarged drum that holds 75' of Dualmatic or 100' of continuous cable. The cable is available in convenient 5 Ft. Dualmatic sections with self-feeding action for maximum flexibility and lower maintenance, or a continuous 1/2" diameter certified music wire with genuine galvanized aircraft wire inner core for longer life.



/ Key Features

- Convenient power cord brackets for safe and easy transport.
- Versatile heavy-duty frame supports operation at 45° or horizontal positions.
- Built-in Ground Fault Circuit Interrupter (GFCI) with a 20 ft. power cord for enhanced safety.
- Air-operated foot switch enables hands-free cable operation.
- Powerful 1/3 H.P. motor ensures efficient cleaning performance.
- Enlarged drum capacity holds 75 ft. Dualmatic or 100 ft. 1/2" continuous cable.
- Durable cast aluminum bracket with bearing-supported guide tube for smooth cable feeding.
- Dual fiber disc slip clutch provides overload protection and prevents cable breakage.
- Cable options in 5 ft. self-feeding Dualmatic sections or 1/2" certified music wire with galvanized aircraft wire core for longer lifespan.
- Optional 2-wheel cart with 10" wheels and adjustable handle for easy transport.
- Wide range of cleaning tools available, with DN-10, DN-11, and DN-12 included in the standard kit.



ELECTRIC EEL DRAIN LINE TOOLS FOR 1/2" INNER CORE AND SECTIONAL CABLES

DH SERIES TOOLS

For use with 5/16" IC and 3/8" IC cables

- DH-7 Drop head adapter
- DH-10 General purpose tool
- DH-11 Drill point tool
- DH-12 Finishing/Grease tool
- DH-10-S Short general purpose tool

DN SERIES TOOLS

For use with 1/2" I.C. cables and 5DN sectional cable

- DN-9 Drop head adapter
- DN-10 General purpose tool
- DN-11 Drill point tool
- DN-12 Finishing/Grease tool
- DN-13 Retriever tool
- DN-14 Drill for 2"-3" lines
- DN-15 Clean up tool for 2" lines
- DN-16 Clean up tool for 3" lines

FITTINGS FOR ELECTRIC EEL 1/2", 5/8", 3/4" CABLES

- DN-25 Front fitting (female) 1/2" cable
- DN-26 Rear fitting 1/2" (male) cable
- SJ-31 Front (male) fitting 5/8" cable
- SJ-32 Rear (female) fitting 5/8" cable
- SP-31 Front (male) fitting 3/4" cable
- SP-32 Rear (female) fitting 3/4" cable
- SP-30 Tool adapter for 5/8" and 3/4" cable

SPECIAL ADAPTERS

NOTE: For use with OTHER brands of drain cleaning equipment

- SP-38 Adapts Electric Eel SP-30 tool adapter to Spartan* 5/8" or 3/4" Cable
- SP-39 Adapts Spartan* lead cable to Electric Eel SP-31 male fitting
- SP-42 Adapts Electric Eel dual tools to General Wire Spring* 3/4" cable

- SP-43 Adapts Electric Eel dual tools to Spartan* 5/8" and 3/4" cable
- SP-44 Adapts Electric Eel dual tools to Ridgid* 1 1/4" sectional cable
- SP-48 Adapts General Wire Spring* tools to SP-31 male fitting
- SP-49 Adapts Spartan* tools to SP-31 male fitting

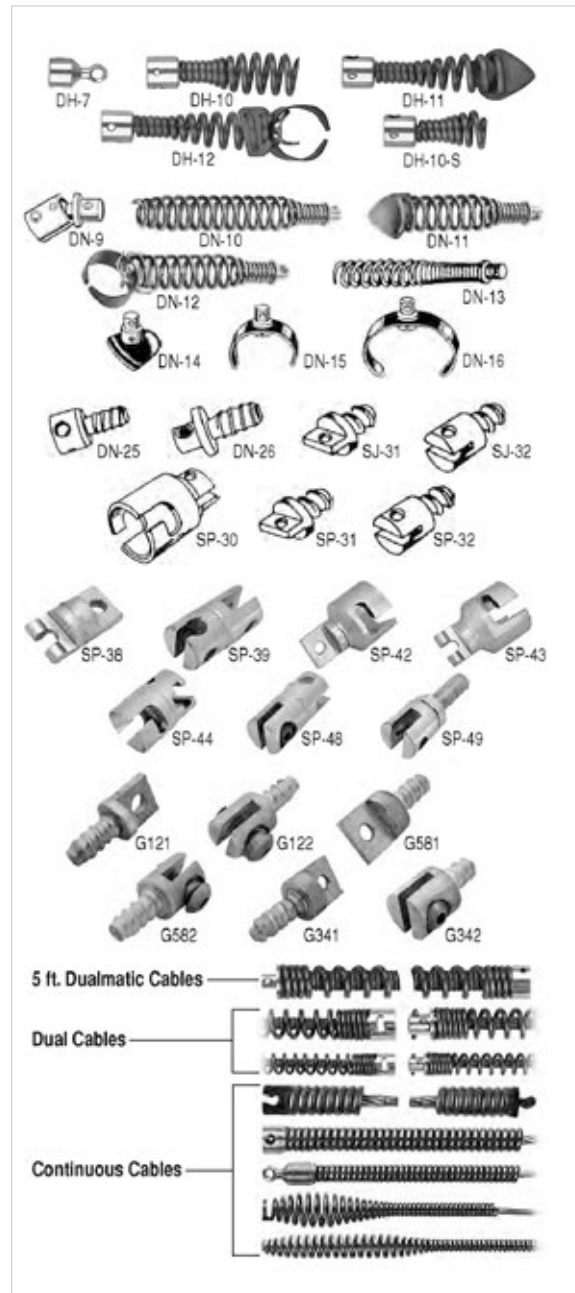
CABLE FITTINGS

The following General Wire Spring* fittings can be adapted to Electric Eel Cables:

- G121 1/2" Male fitting
- G122 1/2" Female fitting
- G581 5/8" Male fitting
- G582 5/8" Female fitting
- G341 3/4" Male fitting
- G342 3/4" Female fitting

CABLES FOR EVERY NEED

- 5 ft. Dualmatic Cables (Model N Only)
- Self-feed Dual Cables for 3"-10" lines available in regular, heavy-duty and municipal
- J Cable 6J (7/8" x 6 ft.) Dual Cable for use in 2"-3" lines (Model C Only)
- Tri-Max 3/4" or 5/8" cable with slot or keyhole end fittings to fit most drain
- cleaning machines
- 1/2" Aircraft Wire Reinforced Cables with front & rear fittings (available in No Core)
- Aircraft Wire Reinforced Cables (5/16" and 3/8") for use with Drop Head series tools
- Expanded End Aircraft Wire Reinforced Cables with bulb end & no rear fittings (5/16", 3/8")
- Expanded End Cables to negotiate pipe traps & drain cross bars (1/4", 5/16", 3/8")



* Spartan, Ridgid, General Wire Spring are trademarked names.

ELECTRIC EEL MODEL Z5



Model Z5 & Model Z5 Auto Feed

Cleans 1-1/4" – 3" diameter lines up to 100 ft. while running 1/2" dia. galvanized aircraft wire inner core cable. Built-in drum shaft slip clutch. Upright frame on large 10" wheels with folding handle. Rear bar shields motor and allows for two position operation. Steel guide tube/inner drum. 1/2" x 75 ft. cable standard.

In addition to all the benefits and features of the standard Model Z5, the auto feed version allows the operator to advance and retrieve the cable with the push of a lever. The cable runs through a guide spring which keeps hands off the rotating cable for added safety.

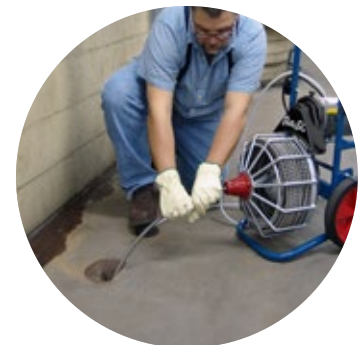


Model Z5 Auto Feed

Model Z5

Key Features

- Heavy-duty steel frame with folding handle for easy transport and compact storage.
- Convenient power cord brackets ensure secure and tangle-free transport.
- Built-in Ground Fault Circuit Interrupter (GFCI) with 20 ft. power cord for enhanced operator safety.
- Air-operated foot switches enable hands-free operation for better control.
- Impact-resistant plastic belt guard provides added safety and allows quick removal for easy maintenance.
- Drum-shaft slip clutch minimizes cable and tool breakage while offering overload protection.
- Innovative inner drum design prevents cable buckling during operation.
- 1/2" certified music wire cable with galvanized aircraft wire inner core for extended lifespan.
- Cast aluminum bracket with bearing-supported guide tube ensures smooth cable guidance.
- Fully open cage design allows easy cable inspection and cleaning.
- Large 10" wheels for improved maneuverability on various surfaces.
- Wheel brake stabilizes the unit during operation.
- Rear motor shield bar offers added protection and supports two-position operation.
- Powerful 1/3 H.P. reversible motor delivers efficient cleaning performance.
- Handy tool bag included for convenient storage of cleaning tools.



ELECTRIC EEL MODEL D5

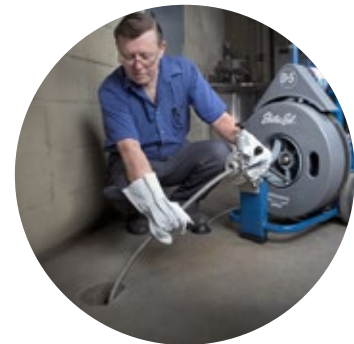
Continuous Cable Drum Machine

The Model D-5 Continuous Cable Drum Machine combines professional quality and affordability for cleaning 3" – 10" diameter lines up to 100 ft. and runs 3/4" dia. Tri-Max cable.



Key Features

- Built-in loading wheel integrated into the handle for effortless transport.
- 1/2 H.P. capacitor-type motor delivers increased torque and reliable performance.
- Reinforced steel framework made from 1-1/4" welded tubing for extra durability.
- Continuous belt skids enable smooth stair climbing.
- Wheel brake ensures stability during operation.
- Large 10" solid wheels provide easy maneuvering and stabilization.
- Built-in GFCI (Ground Fault Circuit Interrupter) with 20 ft. line cord protects against electrical shock.
- Three heavy-duty sealed ball bearings support the drum and guide tube for long-lasting wear.
- Air-operated foot switch allows hands-free, convenient operation.
- Snap-Lock tool connector ensures quick and secure attachment of cleaning tools.
- Quick-remove cable feeder and drum for fast cable replacement and maintenance.
- High-density polyethylene drum and belt guard resist rust and dents, holding 100 ft. of 3/4" cable.
- Five-position adjustable handle for customized height and ergonomic use.



Model D-5 Standard Kit (D5K-3/4IC100) includes

- D-5 power unit with power cable feed
- Two (2) 3/4" x 50 Ft. Tri-Max cables
- Set of seven (7) cleaning tools
- 10 Ft. anchor cable, 2 Ft. flex leader
- Pair of staple palm leather gloves
- Tool box



ELECTRIC EEL MODEL CT

Drain Cleaner

The Model CT is the counter-top drain cleaner that you can count on for top performance to solve all your drain line cleaning problems!

The Model CT features unique variable speed motor control that gives the operator maximum cable control and exceptional cleaning power from 75 to 350 RPM with constant torque.



Electric Eel.

/ Key Features

- Variable speed motor control (75–350 RPM) provides maximum cable control and consistent cleaning power with constant torque.
- 1/5 HP, 90 Volt DC motor delivers quiet, powerful, and reliable performance.
- Two-way automatic cable feed allows hands-free cable advancement and retrieval with a simple lever push.
- Heavy-duty housing protects the motor and internal wiring from damage.
- Cable guide hose prevents cable whipping and helps maintain a clean work area.
- Stainless steel cable drum resists rust and dents, ensuring long-lasting durability.
- Well-balanced, heavy-duty steel tubular frame supports two-position operation for increased versatility.
- Built-in GFCI (Ground Fault Circuit Interrupter) on a 20 ft. line cord enhances operator safety against electrical shocks.
- Air-operated foot switch enables convenient hands-free operation.
- Certified music wire cables with optional inner core (IC) design resist kinks and deliver superior performance in tough clogs.
- Compatible with 1/4", 5/16", and 3/8" cables to clean kitchen, bath, and vent lines.
- Drop head tools easily attach to 5/16" and 3/8" IC cables via DH-4 fitting, offering flexible cleaning options.
- Cable drum capacity:
 - Up to 50 ft. of 1/4" or 5/16" cable
 - Up to 35 ft. of 3/8" cable



ELECTRIC EEL MODEL S



Drill Snake

The Model S Hand-held 1/2" drill-powered machine can be used for cleaning small, inside lines 1 1/4" – 2 1/2" in diameter up to 35 Ft. Double insulated commercial grade 1/2" heavy-duty drill for shock prevention.

Lightweight stainless steel cable drum won't rust, break or crack. Cast aluminum hand guard is designed for safety and ease-of-use. Cable available in 1/4", 5/16", and 3/8" diameter. Expanded end or drop head cable in 15', 25', 35' sections.



/ Key Features

- Jacobs easy-to-tighten cable chuck made of advanced composite material with hardened steel liner and jaws, provides secure fit, rust resistance, and long-lasting performance.
- Certified music wire cables with galvanized aircraft wire inner core (IC) deliver superior durability and kink resistance.
- Lightweight stainless-steel drum offers excellent durability and corrosion resistance in harsh environments.
- Cast aluminum hand guard ensures operator safety and easy handling.
- Variable speed, 1/2" reversing drill with double ball bearing pear head provides smooth, quiet performance and is double insulated for operator protection.
- Compatible with 1/4", 5/16", and 3/8" expanded end cables (E) for clearing kitchen and bath drains or vent lines.
- Expanded end inner core cables (EIC) in 5/16" and 3/8" sizes are specially designed to break through tough clogs while resisting kinks.
- Drop head tools easily attach to 5/16" and 3/8" inner core cables (IC) via DH-4 fitting, offering versatile cleaning options with built-in drop head action.



ELECTRIC EEL MODEL 325

Electric Eel

The Model 325 Gasoline powered sewer cleaner is designed to clean 4"-14" diameter lines for distances up to 500ft. and is ideal for industrial, contractor, and municipal use.

Powered by a 6.5HP industrial/commercial engine, the Model 325 features a 3 speed forward and reverse automotive transmission that spins the heavy duty dual sectional cable at 1050RPM in 3rd gear for plenty of cleaning power. A rugged steel base and pneumatic roller bearing wheels maneuver over all types of terrain. Easily adjustable heavy-duty safety clutch provides overload protection.



Key Features

- Fingertip engine throttle control for effortless speed adjustments.
- 6.5 H.P. industrial/commercial 4-cycle Briggs & Stratton engine with recoil starter delivers reliable power for demanding jobs.
- Automotive clutch system ensures smooth and efficient power transfer from engine to transmission.
- 3-speed forward and reverse transmission offers cable rotation at 350 RPM (First Gear/Reverse), 650 RPM (Second Gear), and 1050 RPM (Third Gear) at full throttle.
- Adjustable heavy-duty safety clutch protects cable and tools by slipping under excessive load conditions.
- Durable 3/16" steel base withstands heavy-duty applications and rough environments.
- 12" pneumatic tires with roller bearing wheels provide easy maneuverability across various terrains.
- Foot-operated automotive clutch pedal enhances operator convenience.
- Removable handle allows for compact storage and easy transport.
- Patented self-feeding heavy-duty dual cable system (1-1/4" diameter) minimizes cable handling and reduces cable loss.
- Right hand wound outer coil and 5/8" left hand wound inner coil anchored to the coupling prevent helixing and improve cable performance.
- Open spaced outer coil design loosens deposits and augers them back effectively.
- Patented snap lock couplings offer secure, tool-free joining of 8-foot cable sections with stainless steel drive pins for enhanced durability.



ELECTRIC EEL MODEL 800

Hydrostatic Sewer Cleaner

The Model 800 Hydrostatic Sewer Cleaner is professionally engineered to clean 4" – 24" diameter pipelines for distances up to 650ft.

The Model 800 features infinitely variable drive speeds and an automatic transmission.

Electric Eel



/ Key Features

- Infinitely variable cleaning speeds controlled by a convenient hand lever, delivering full torque from 50 to 1,000 RPM.
- 8 HP gasoline engine (optional 9 HP diesel engine) offers superior horsepower compared to other models.
- Removable handle allows for compact storage and easy transport.
- Self-feeding 1-1/4" (32mm) municipal cable eliminates manual handling, ensuring faster and safer cleaning operations.
- Right hand wound outer coil and 11/16" (16mm) left hand wound inner coil, anchored to the coupling, minimizing helixing and prevent cable loss in the pipeline.
- Open space outer coil design loosens deposits and augers them back efficiently.
- Patented Snap-Lock couplings enable quick and secure joining of 8 ft. (2.45 m) heavy-duty cable sections without the need for screws, nuts, or loose pins.
- Safety hydraulic relief valve ensures secure cable change operations.
- Ball bearing steel wheels with 12" pneumatic tires provide easy maneuvering across various terrains.
- Rugged steel base integrates a five-gallon (19L) hydraulic oil tank with a baffled cooler for extended equipment life.
- The hydraulic pump system passes up to 13 GPM with a lifespan of up to 45,000 hours.
- High-pressure hoses rated up to 3000 PSI ensure durability in demanding applications.
- Hydraulic oil tank gauge for convenient monitoring of fluid levels.
- Aircraft-grade JIC hydraulic fittings provide reliable connections.
- 1.5 Gal. (5.7L) fuel tank supports extended operation periods.

ELECTRIC EEL MODEL EJ 1500

Jetter Cleaner (Electric)

Blast through grease, sand, soap, and sludge with the EJ1500 Water Jet. The Model EJ1500 features a 1500PSI/1.7 GMP duplex pump with pulsation, a thermal relief valve, an inlet shut off valve, and a 20ft. power cord with built-in GFCI.

Extremely portable, the EJ1500 is available with sturdy 10" pneumatic tires and hose reel with removable handle (as picture). The pump/motor assembly removes from the base in seconds for added portability.



Electric Eel.

/ Key Features

- Cleans 1½"– 4" dia. Drain lines
- 1500 psi / 1.7 gpm
- 1.5 h.p., 15 amp motor
- Duplex pump w/pulsation
- Reel capacity 150 ft. Of 1/4" hose
- Pump/motor assembly removes in seconds for added portability.
- Sturdy 10" pneumatic tires for ease of transport.
- Thermal relief valve and inlet shut off valve.
- Removable handle/reel on cart assembly.
- Utilizes 1/8" and 1/4" dia. Jet hose.
- 20 ft. Power cord w/gfci.

ELECTRIC EEL MODEL EJ 3000

Electric Eel

Gasoline

The EJ3000 Gasoline Powered Drain Jetter provides power and portability for a fast blast through clogged drain lines. Our steel nozzles will penetrate and clean tough problems from pipe walls.

EJ3000 Gasoline Powered Drain Jetter cleans 2"– 8" diameter drain lines up to 300 Ft. 3000 PSI / 4.7 GPM; 13 HP Overhead Valve Engine for Smooth Quiet Running and Dependable Operation – Electric Start Available; 2-to-1 Gear Reduced Triplex Pump with Pulsation for Longer Life; 300 Ft. Capacity Hose Reel; Throttle Back Control Automatically Adjusts Engine Speed; Low Tone Muffler for Quiet Operation.



/ Key Features

- Cleans 2"– 8" Dia. Lines up to 300 Ft
- 3000 PSI / 4.7 GPM.
- 13 HP Overhead Valve Engine for Smooth Quiet Running and Dependable Operation – Electric Start Available.
- 2-to-1 Gear Reduced Triplex Pump with Pulsation for Longer Life.
- 300 Ft. Capacity Hose Reel.
- 12" Pneumatic Tires for Easy Maneuverability on Rugged Steel Base with Front Bar for Motor Protection.
- Heat Shield to Protect Hose.
- Convenient Nozzle Storage on Unit.
- Throttle Back Control Automatically Adjusts Engine Speed.
- Low Tone Muffler for Quiet Operation.
- Utilizes 1/4" and 3/8" Dia. Jet Hose.



7



**INSPECTION
CAMERAS**

EEL VISION ELITE

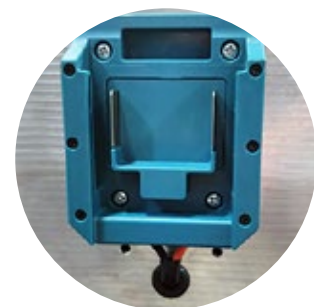
with 200 ft push rod

Electric Eel.

Made in the USA, the EELvision Elite features a 1.3" diameter self-leveling color camera for inspecting 3"-10" diameter lines with vivid adjustable LED lights and a large 7" monitor for easy viewing. A sunshield allows for outdoor viewing and protects the monitor in transport.

/ Key Features

- 200' of ½" diameter premium push rod
- Footage Counter– the on-screen footage counter allows the operator to know exactly how many feet the camera has been inserted into a line. The counter can be reset at any time by pushing the "counter reset" button on the monitor.
- Self-Leveling Color Camera – the picture on the screen can always be viewed right side up.
- A continuous display odometer located on bottom right of the monitor screen tracks footage usage on a job.
- One touch recording to USB and screen shot capability
- Extended ergonomic handle to facilitate maneuverability and transport
- Heavy duty metal frame and wheels
- Reel brake
- User friendly control panel
- Quick start guide tutorial prompts
- QR code for manual and support accessibility
- Built-In always on sonde
- Dual power sources – AC and battery
- Makita 18V battery port affixed to back of the monitor housing allows for use when AC power is not available.
- A dual battery adapter is also provided with the View which allows for the use of a Milwaukee or Dewalt 18V battery.



PEARPOINT FLEXIPROBE P540C

with 200 ft push rod

The flexiprobe P540c system simplifies your operations by automatically creating a survey report, allowing you to concentrate on your inspection tasks. The P540c is an advanced pushrod inspection system. It allows operators to precisely identify and document pipeline faults using digital video recording.

Lightweight, rugged and weatherproof, the system is designed for use in harsh conditions. It is easy to transport and deploy, enabling quick and successful inspections.

PEARPOINT 



/ Key Features

- **Pipe Inspection Capability:** Suitable for inspecting 4"–12" pipes, ensuring comprehensive coverage.
- **High-Resolution Camera:** Delivers clear and detailed imagery for accurate assessments.
- **Intuitive User Interface:** Powerful controller with simple menus and context-sensitive buttons for seamless operation.
- **Built-in Rechargeable Batteries:** Provides up to 7.5 hours of continuous usage with the option to charge on the move.
- **Rugged Design:** IP55-rated case ensures durability in challenging environments.
- **Quick Boot-Up Time:** Minimizes waiting time and maximizes productivity.
- **Multi-Language Menus:** Offers flexibility to operate in different languages.
- **Dedicated Function Buttons:** Frequently used tasks like "Record", "Make an Observation", and "Count Reset" have individual buttons for faster operation.
- **Full QWERTY Keyboard:** IP55 ingress protection with regional layout options for easier data input.
- **Multiple Reporting Standards:** Supports customizable reports and WRc's MSCC3, MSCC4, and MSCC5 condition codes to meet customer requirements.
- **Report Export Options:** Generates DOCX and XML reports for easy editing and customization on a PC.
- **Optional WinCan Export License:** Available as an upgradeable option for advanced reporting needs.
- **On-Board Connectivity:** Enables instant report creation and sharing or export via USB with three available ports.



PEARPOINT FLEXITRAX C550C



Portable video inspection for drainage, water and plumbing networks

This versatile, high-performance solution is designed to enhance productivity, accuracy, and client satisfaction in pipeline inspection projects. The flexitrax C550c is developed around simplicity of operation. Ready to use in 30 seconds from powering on, it requires minimal training to operate, letting you concentrate on pipe inspection.



/ Key Features

→ Efficient Pipe Inspection

- Survey pipes ranging from 1.25" (32mm) to 60" (1500mm) with precision and speed.
- Accelerate daily survey completion with faster inspections.

→ User-Friendly Interface

- Intuitive interface for quick setup and seamless operation.
- Dedicated function keys simplify navigation and control.
- Large 12.1" daylight-readable screen for enhanced visibility in various environments.

→ Connectivity & Data Sharing

- Stay connected with WiFi capability, enabling instant report sharing via Dropbox or email.
- Advanced connectivity options including USB, HDMI, and Ethernet for easy data export.

- Stream video directly to nearby devices for real-time inspections.

→ Reliable Power Supply

- Built-in rechargeable batteries offering all-day performance on a single charge.

→ Comprehensive Reporting Options

- Generate a range of tailored survey reports to meet diverse client needs.
- Seamlessly integrate with Cues GraniteNet software for NASSCO-compliant reports (PACP, LACP, MACP).
- Produce basic or customized reports with flexible output formats.

→ Modular & Flexible Design

- Modular system design is compatible with a variety of products and accessories.
- Adapt to different project requirements with flexible configuration options.





VERY SMART LEAK DETECTION SENSORS

Pipe Tools is a leading provider of professional tools for water and sewer professionals. We offer a full line of water leak detection, locating and monitoring tools to service many types of end users.

GET IN TOUCH



www.pipetools.com

Water Leak Correlators / Correlating Noise Loggers /
Listening Devices for Water Leak Detection Surveys / Ground Microphones /
Leak Detection Sensors Pipe Assessment Software / Hydrophones /
Pressure Management Tools / Magnetic Locators /
Sonde, Pipe and Cable Locators



PIPE TOOLS, INC.

2835 Haddonfield Road
Pennsauken, New Jersey 08110-1108
www.pipetools.com